

Smart FC Adapter for Emergency Communication

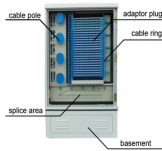


Overview

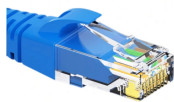
The Secure Headset Group (SHG) wireless headset adapter delivers reliable wireless communication and seamless PTT (push-to-talk) functionality for public safety dispatch, air traffic control, radio operations, and simulation training. L-com stocks a wide range of fiber optic couplers and adapters. Fiber optic's advantages over copper cabling are well known immunity to EMI and RFI, low attenuation over long distances, high bandwidth capacity, smaller size and lower weight. These are also known as FC fiber optic mating sleeves and are available in both single mode and multimode variants with either a zirconia sleeve or bronze sleeve. They are also available in simplex with round and square types for flange. Note: Some products are available only in certain regions. Contact us regarding local availability. SmartCommand Call Boxes (3300 Series) Each two-way communication system for rescue assistance is required to have hands-free devices (call boxes) located on each floor above/below the main exit. Sencomm delivers the ultimate guide to choosing the best dispatcher headsets and push-to-talk adapters! For over 25 years, Sencommunications, Inc. As. Advances within information, device, and networking technologies are enabling emergency response agencies to

connect with their people, equipment, and systems in real-time. As we advance, the focus on developing.

Smart FC Adapter for Emergency Communication



Each two-way communication system for rescue assistance is required to have hands-free devices (call boxes) located on each floor above/below the main exit floor.



Our single mode fiber adapters feature ceramic sleeves for precision alignment and our multimode fiber adapters are built with bronze alignment sleeves for extra durability.



Integrating interconnected technologies, cyber-physical systems, and high-speed connectivity into vehicles offers a revolutionary approach to managing incidents. These rigs serve as ...



These adapters deliver the industry's leading FC performance with up to 2.6 million IOPS (up to 650K IOPS per port) with optimal load balancing and linear performance scalability per port.



The Secure Headset Group (SHG) wireless headset adapter delivers reliable wireless communication and seamless PTT (push-to-talk) ...



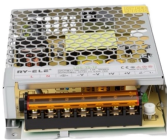
The CEL-FI GO RED FirstNet Booster delivers cellular coverage in buildings for emergency communications from police, fire, and medical personnel. CEL-FI GO RED with the CEL-FI Antennas ...



Rescue GSM is a manufacturer and wholesale distributor offering code compliant LTE MiMo cellular communication solutions for elevators, 2-Way/Area of Rescue and Public Safety emergency phones.



The Secure Headset Group (SHG) wireless headset adapter delivers reliable wireless communication and seamless PTT (push-to-talk) functionality for public safety dispatch, air traffic control, radio ...



Rescue GSM is a manufacturer and wholesale distributor offering code compliant LTE MiMo cellular communication solutions for elevators, 2-Way/Area of Rescue ...



The Digi communications hub provides wired and wireless connectivity in the emergency vehicle. It also distributes accurate location data to other systems in the vehicle and to dispatch.



Fibertronics offers a variety of FC adapters that are available in single mode & multimode as well as simplex with round & square types for flange mounts.



Our CNS team offers the communication devices and networks emergency response teams need to effectively perform their vital lifesaving operations. Using cellular routers to create a secure vehicle ...

Contact Us

For more information, pricing, or custom network solutions, please contact us:

Website: <https://hashherbcafe.co.za>

Email: hello@hashherbcafe.co.za

Phone: +27 63 814 7295

Address: 15 Galaxy Road, Linbro Business Park, Johannesburg, 2065, South Africa

This document is for informational purposes only. Specifications subject to change without notice.

