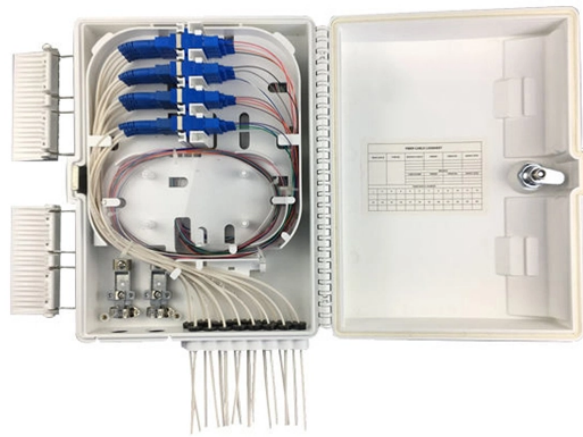


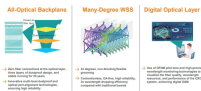
Single-core anti-electro-tracking optical cable for oil and petrochemical applications



Single-core anti-electro-tracking optical cable for oil and petrochem



Fibercore has designed a range of specialty optical fibers specifically designed for use in the oil and gas industries. Our specialty optical fibers are uniquely designed used for fiber optic sensing ...



up to 4 - 24 optical fibers in water blocked loose tube. Taped, corrugated steel tape armored (STA); polyethylene (HDPE) outer shea hed; and embedded with two steel wires on the periphery. T



At Prysmian, we design our special fibre optic cables to overcome the obstacles presented in the creation of optical fibre networks today. We provide new solutions specifically for harsh ...



Above figures are nominal values; actual production dimensions and weights may deviate slightly from the indicated figures above.



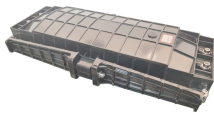
-Rated, Loose Tube, Gel-Free Cable48 F, Single-mode (OS2) Part Number: 048EUL-T3601D2M Corning dielectric, tray-rated, mining and petrochemical fiber optic cables are designed ...



High temperature resistant armored optical cable for oil field - seamless steel tube single core



These double jackets resist hazards found in mines and petrochemical complexes, making this cable ideal for any harsh environment requiring a more robust cable and suitable for direct-buried ...



Browse our selection of Corning 012EUL-T3601D2M 12 Fiber Single-mode Mining and Petrochemical Tray-Rated Loose Tube Gel-Free Cable. [Click for a free quote.](#)



We offer customized and fully functional fiber optic devices in oil and gas as well as petrochemical industries. This fiber optic communication technology, often blended with existing legacy networks, is ...



The cable consists of loose tubes containing single mode fibers surrounded by a non-metal central strength member. An anti-tracking material is used as the inner sheath, and Kevlar yarns are applied ...

Contact Us

For more information, pricing, or custom network solutions, please contact us:

Website: <https://hashherbcafe.co.za>

Email: hello@hashherbcafe.co.za

Phone: +27 63 814 7295

Address: 15 Galaxy Road, Linbro Business Park, Johannesburg, 2065, South Africa

This document is for informational purposes only. Specifications subject to change without notice.

