

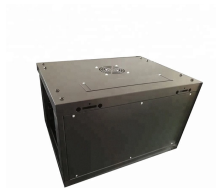
## Simple Understanding of Wavelength Division Multiplexing



## Simple Understanding of Wavelength Division Multiplexing



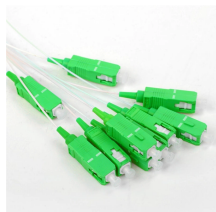
Ever wondered how a single strand of optical fiber can carry the world's internet traffic, countless Zoom calls, and your favorite Netflix shows—all at once? The answer lies in the magic of Wavelength Division Multiplexing ...



Wavelength Division Multiplexing (WDM) uses multiple wavelengths (colors of light) to transport signals over a single fiber. It uses light of different colours to create a number of signal paths.



What Is WDM (Wavelength Division Multiplexing)? Briefly speaking, WDM is a technique in fiber optic transmission for using multiple light wavelengths to send data over the same medium.



Wavelength Division Multiplexing (WDM) is a technique that combines multiple optical signals with different wavelengths (or frequencies) and sends them over a single optical fiber. Each ...



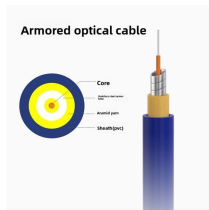
Wavelength division multiplexing (WDM) is a technique of multiplexing multiple optical carrier signals through a single optical fiber channel by varying the wavelengths of laser lights. WDM allows ...



What is Wavelength Division Multiplexing (WDM)?  
 Wavelength Division Multiplexing (WDM) is a technique in fiber-optic communication systems that enables multiple optical signals with different ...



Wavelength Division Multiplexing (WDM) is a fiber optic transmission technique that combines multiple optical signals at different wavelengths into a ...



Wavelength division multiplexing is a technology in which multiple optical signals (laser light) of different wavelengths or colors are combined into one signal and is transmitted over the communication channel.



Wavelength Division Multiplexing achieves its capacity increase by exploiting a physical property of light: different wavelengths, or colors, can travel through the same medium independently.



Wavelength Division Multiplexing (WDM) is a fiber optic transmission technique that combines multiple optical signals at different wavelengths into a single fiber, significantly increasing ...



In fiber-optic communications, wavelength-division multiplexing (WDM) is a technology which multiplexes a number of optical carrier signals onto a single optical fiber by using different ...

## Contact Us

For more information, pricing, or custom network solutions, please contact us:

Website: <https://hashherbcafe.co.za>

Email: [hello@hashherbcafe.co.za](mailto:hello@hashherbcafe.co.za)

Phone: +27 63 814 7295

Address: 15 Galaxy Road, Linbro Business Park, Johannesburg, 2065, South Africa

This document is for informational purposes only. Specifications subject to change without notice.

