

## Should the distribution box be closed properly



### Overview

Unless you perform maintenance or repairs, it is standard to keep distribution boards closed and locked at all times. NEC Article 314 establishes requirements for the installation and use of electrical boxes, conduit bodies, fittings, and handhole enclosures. A conduit body is a removable-cover section of a conduit system that provides access at junctions or termination points. Neglecting DB maintenance can lead to: For electricians and maintenance professionals, understanding proper MCB distribution box maintenance. These markings allow the proper location of energy-isolating devices for lockout/tagout activities in accordance with your organization's energy control procedures. Ensure that. By the end of this Toolbox Talk, you'll be equipped with the knowledge to maintain Safe Practices around electrical panels, ensuring not only your safety but also the safety of your coworkers.

## Should the distribution box be closed properly



The panel should have a closed cover. The cover should not be locked unless work is in progress requiring that the cover be locked as part of the lockout procedure.



There should be at least 3 feet of clearance in front of and to the side of electrical equipment. Assure electrical disconnects are correctly marked and correspond to the equipment's ...



The box should be level, easily accessible, and positioned at the proper height according to local codes. Ensure adequate clearance around the box for maintenance access.



Electrical boxes must provide sufficient space for conductors and devices to prevent overheating and insulation damage. Overcrowding restricts heat dissipation and increases fire risk.



Proper clearance around electrical panels is essential for preventing accidents and ensuring safe maintenance. Adequate space reduces the risk of electric shock, fire, and other hazards, allowing ...



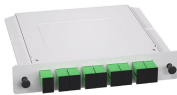
Switch box shall be distributed by the final sub-distribution box. 2. The power distribution box and switch box must be rainproof and dustproof. 3. When the construction site stops working for ...



Electrical panels, also known as breaker boxes or distribution boards, are critical components in our electrical systems. They distribute electricity throughout a building and house circuit breakers that ...



For electricians and maintenance professionals, understanding proper MCB distribution box maintenance is essential. This guide outlines practical, field-tested maintenance tips that every ...



Unless you perform maintenance or repairs, it is standard to keep distribution boards closed and locked at all times. Sealing a distribution board protects both the board and people from ...



On a regular basis, they should go out and inspect the areas around them to make sure nothing has been placed where it should not go. If anything is found in a spot that is too close to the ...

## Contact Us

For more information, pricing, or custom network solutions, please contact us:

Website: <https://hashherbcafe.co.za>

Email: [hello@hashherbcafe.co.za](mailto:hello@hashherbcafe.co.za)

Phone: +27 63 814 7295

Address: 15 Galaxy Road, Linbro Business Park, Johannesburg, 2065, South Africa

This document is for informational purposes only. Specifications subject to change without notice.

