

## Schematic diagram of the small busbar at the top of the screen



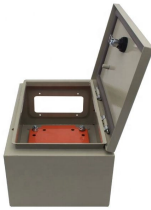
## Schematic diagram of the small busbar at the top of the screen



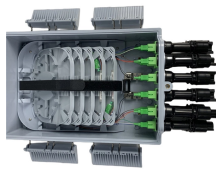
Figure 1.12 illustrates the main and transfer bus arrangement in a generating station. Such an arrangement consists of two bus-bars, known as main bus-bar and transfer bus-bar used as an ...



The diagram consists of a series of vertical and horizontal lines representing the conductors, which carry the electrical current. The vertical lines represent the power supply, while the ...



Single-line diagrams typically feature standard symbols to represent the different nodes in an electrical schematic. Additionally, the power source is displayed at the top of the symbol to indicate the ...



The document discusses different types of busbar systems used in substations: 1) Single line diagrams provide a graphical representation of the electrical installation showing main elements and ...



3) Standard drawings for busbar gantry and double jumper connections at substations. The drawings provide technical details for construction and installation of overhead lines and substation ...



By looking at the diagram, you can identify which components are connected to which busbars and how they interact with each other. This allows you to gain a better understanding of how ...



This AutoCAD DWG file provides a complete Electrical Single Line Diagram (SLD) of the MSB, along with a detailed panel layout, including circuit breakers, busbars, instruments, and feeders.



Choose to display circuit components as they appear in real life or as they appear in schematic circuit diagrams. The Lab Screen changes as you play with it. It has a Play Area and a Control Area. ...



A bus bar is a metal bar or plate that conducts electricity, distributing it to devices. Therefore it serves the same purpose as a wire, and like a wires it is often represented by a line on a schematic.



In this article, we will discuss the importance of busbar circuit diagrams and how they work. We will also explore the different types of wiring diagrams, such as single line, double line, and ...

## Contact Us

For more information, pricing, or custom network solutions, please contact us:

Website: <https://hashherbcafe.co.za>

Email: [hello@hashherbcafe.co.za](mailto:hello@hashherbcafe.co.za)

Phone: +27 63 814 7295

Address: 15 Galaxy Road, Linbro Business Park, Johannesburg, 2065, South Africa

This document is for informational purposes only. Specifications subject to change without notice.

