

## San Marino Technical Support for Butterfly Drop Cable G 657A1



### Overview

Call Us: 1-516-482-6313 Text Us: 1-516-703-3460 Live Chat: Bottom Right Corner! About : TeraFlex Bend Resistant G. 657A1 Singlemode loose tube cables are the product of choice as the backbone in Outside Plant (OSP) environments. Optical fibers are placed inside filled buffer tubes. This method is in accordance with the rounding method of ASTM Practice E29 (Standard Practice for using significant di The optical fiber unit is positioned in the center. Then, the cable is completed with a black or color LSZH sheath. Internal FTTH applications horizontal. As Fiber to the Home (FTTH) networks expand, technicians frequently encounter different fiber standards in the field—most notably ITU-T G. A common question among network engineers is how these fibers differ, especially when it comes to fusion splicing. \* Aged in 1% hydrogen gas and 1 atm, according to IEC 60793-2.

## San Marino Technical Support for Butterfly Drop Cable G 657A1



For further information on similar products, our expert technical support and knowledgeable sales team can help you get the perfect Indoor/outdoor cable 9µm/125µm singlemode G657A1 fiber cable for ...



EasyBand® G657A1 bending insensitive single-mode fibre encompasses all the features of FullBand® fibre and provides good resistance to macro-bending. It has low macro-bending sensitivity and low ...



This objective technical guide will break down the G.652D vs G.657A1 vs G.657A2 comparison, analyzing their physical structures, bend radii, ...



TeraFlex Bend Resistant G.657A1 Singlemode loose tube cables are the product ...



It features a central loose tube housing a combination of 12F Multi Core Fiber (MCF) and 12F G.657A1 Nova fibers, offering a balance of high density and bend-insensitive performance.



FTTH outdoor drop cable G657A1/G657B/G652D with FRP strength member. 1-4 ...



Special low-bend-sensitivity fiber provides high bandwidth and excellent communication transmission property. Two parallel FRP strength members ensure good performance of crush resistance to ...



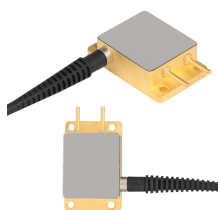
Universal (Indoor/Outdoor) dry core (not longitudinal watertight) tight buffered optical fiber distribution cable with Low Smoke Zero Halogen outer jacket. 6 fibers SM OS2 G.652.D & G.657.A1.



TeraFlex Bend Resistant G.657A1 Singlemode loose tube cables are the product of choice as the backbone in Outside Plant (OSP) environments. Optical fibers are placed inside filled buffer tubes ...



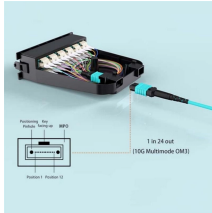
\* Aged in 1% hydrogen gas and 1 atm, according to IEC 60793-2.



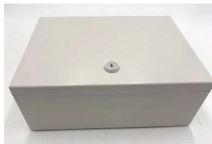
..... ITU-T G.657.A1  
Selection Template: .....  
..... nuation over the  
spectral range 1310-1625 ...



G657A1 Air Blown Optical Fiber Cable ...  
Registered Office E 1, MIDC Industrial Area, Waluj,  
Aurangabad, Maharashtra, India - 431 136



The cable is protected by a dielectric strength member made of fiberglass reinforced plastic (FRP), steel wire and a LSZH outer jacket. Designed for outdoor installation, the cable is well suited for ...



Compatibility here means that these fibres will introduce negligible system impairment or deployment issues, but may not be compliant to the referenced Recommendation (ITU-T G.652.D).



The document provides specifications for two types of self-supporting drop cables (DROP CABLE-1 and DROP CABLE-2) using G.657A1 fiber, detailing their materials, dimensions, and mechanical ...

## Contact Us

For more information, pricing, or custom network solutions, please contact us:

Website: <https://hashherbcafe.co.za>

Email: [hello@hashherbcafe.co.za](mailto:hello@hashherbcafe.co.za)

Phone: +27 63 814 7295

Address: 15 Galaxy Road, Linbro Business Park, Johannesburg, 2065, South Africa

This document is for informational purposes only. Specifications subject to change without notice.

