

San Marino ODF Patch Panel 6 Cores



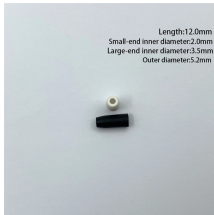
San Marino ODF Patch Panel 6 Cores



The range of FO patch panels and ODF are the most in-demand on the SCS market. The company offers these solutions. This section details product specifications. If you have any questions, please ...



Learn differences between fiber patch panels and ODF. Covers topology placement, splicing, MPO/MTP, OS2/OM4, density, best practices, and ...



Learn differences between fiber patch panels and ODF. Covers topology placement, splicing, MPO/MTP, OS2/OM4, density, best practices, and FAQ for networks.



Streamline your fiber connectivity with our premium Fiber Optic Patch Panels and ODF systems. Designed for reliability and ease of use, our rack-mount and wall-mount solutions provide the perfect ...



Fiber Distribution Products and Data Cabinets | Micos Telcom



Designed for use in data centers, telecommunications rooms, and enterprise networks, these panels enable efficient splicing, patching, and routing while maintaining accessibility and minimizing downtime.



Wall mount fiber patch panels provide effective storage and protection to the optical splices of the fiber optic cables. These patch panels can be deployed in both indoor and outdoor environments.



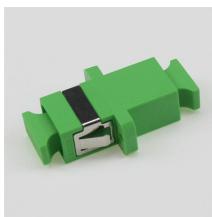
Achieve successful cable management, handle high amounts of fiber cable and add density to fiber frames with the new DCX Optical Distribution Frame (ODF) System which features innovations like ...



Discover 6 core ODF fiber optic patch panels with SC/LC connectors, CE/ROHS certification, and durable zinc-plated steel for reliable FTTH network connectivity.



The units are available in two panel sizes both with maximum number and without adapters mounted. It is front serviced and consists of two panels possible to swing out for easy installation and maintenance.



Our patch panel offers high-density fiber connectivity in a compact 4RU enclosure, perfect for space-constrained environments. Seamlessly integrate with our FlexCore™ ODF 600mm frames.

Contact Us

For more information, pricing, or custom network solutions, please contact us:

Website: <https://hashherbcafe.co.za>

Email: hello@hashherbcafe.co.za

Phone: +27 63 814 7295

Address: 15 Galaxy Road, Linbro Business Park, Johannesburg, 2065, South Africa

This document is for informational purposes only. Specifications subject to change without notice.

