

## Sample of a best-selling optical protection switch



## Sample of a best-selling optical protection switch



FS optical line protection switch features 1+1 backup and less than 15 ms fast switch to the standby fiber link that ensures business uninterrupted when malfunction occurs.



2x4 Fiber Optical Switch This 2x4 type optical switch has low insertion loss, low driving power, compact size, and fast switch...



It adopts an advanced optical path automatic switching module. The signal state of the optical path can be switched instantaneously to ensure that the protection system operates normally when the main ...



It adopts an advanced optical path automatic switching module. The signal state of the optical path can be switched instantaneously to ensure that the protection ...



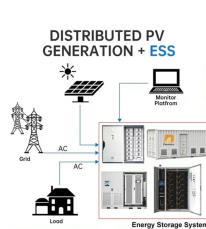
There are different types of optical line protection devices for network protection. The most commonly used OLP are OLP 1:1 and OLP 1+1. Both of them require a spare fiber optic path. But they use ...



OLP products include fiber optical line protection switches, optical bypass switches, optical cross connection, multi-channel optical link selector, rackmount optical switches, DCM and EDFA to ...



Comprehensive fiber link protection for all scenarios. Custom solutions. Ultrafast recovery ~ 100ns. Flexible interface. Cost-effective. Excellent customer service.



This optical switches buying guide provides technical background, comparison of major types, selection criteria, and an overview of suppliers.



We have accumulated more than 15 years of experience and have established a strong foundation in the field of fiber-optic communication/content transmission network/multimedia encryption systems.



Shop our selection of optical protection switches for reliable and efficient industrial networking. Enjoy durable, high-performance solutions for your needs.



CTC Union offers a full spectrum of products, including Optical Protection Switch Card, Industrial Ethernet, PoE, EN50155 and E-Mark certified switches. CTC Union's goal is to provide reliable, ...

## Contact Us

For more information, pricing, or custom network solutions, please contact us:

Website: <https://hashherbcafe.co.za>

Email: [hello@hashherbcafe.co.za](mailto:hello@hashherbcafe.co.za)

Phone: +27 63 814 7295

Address: 15 Galaxy Road, Linbro Business Park, Johannesburg, 2065, South Africa

This document is for informational purposes only. Specifications subject to change without notice.

