

## Samoa s best aluminum alloy cable trays



## Samoa s best aluminum alloy cable trays



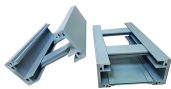
Aluminum Cable Tray systems are lighter than steel cable tray and Certified CSA Cable Tray, UL listed, NEMA and certified. Because of their lighter weight aluminum cable trays are easier to install than ...



As a less-expensive alternative to conduit, a stronger alternative than wire basket, and superior to generic tray, Snap Track saves on labor and reduces total installed costs.



Al Amal Co. prides itself in delivering the best cable trays in the market. Al Amal Co. offers a wide range of Cable Ladder systems, fitting and accessories for a variety of industrial uses. These channels ...



Our aluminum, I-beam ladder cable trays feature 3-inch tangents and are using connectable with our fittings and accessories. Aluminum ladder cable trays benefit from being lightweight and resistant to ...



Custom manufacturer of cable trays made from aluminum, fiberglass reinforced plastic (FRP), galvanized and stainless steel materials. Suitable for supporting insulated electrical cables.



Aluminum Cable Trays are a light weight for easier installation while offering a high loading capacity to manage large cable runs. Components are easy to attach with our quick connection system.



The aluminum cable tray is a lightweight, durable, and cost-effective solution used for organizing and safely carrying electrical and data cables. With easy installation and strong corrosion resistance, it is ...



Discover aluminum alloy cable trays that are lightweight, corrosion-resistant, and optimize heat dissipation for safe, long-lasting cable management.



Made from aluminum alloy, these rugged components bolt together to form a solid and reliable cable pathway. To secure and protect your infrastructure cables, RXL offers high quality aluminum cable ...



PowerTray is a versatile Aluminum Ladder Tray system available in a broad range of NEMA and CSA Load classes. A full line of accessories, covers, and radius fittings are available including “snap-in” ...

## Contact Us

For more information, pricing, or custom network solutions, please contact us:

Website: <https://hashherbcafe.co.za>

Email: [hello@hashherbcafe.co.za](mailto:hello@hashherbcafe.co.za)

Phone: +27 63 814 7295

Address: 15 Galaxy Road, Linbro Business Park, Johannesburg, 2065, South Africa

This document is for informational purposes only. Specifications subject to change without notice.

