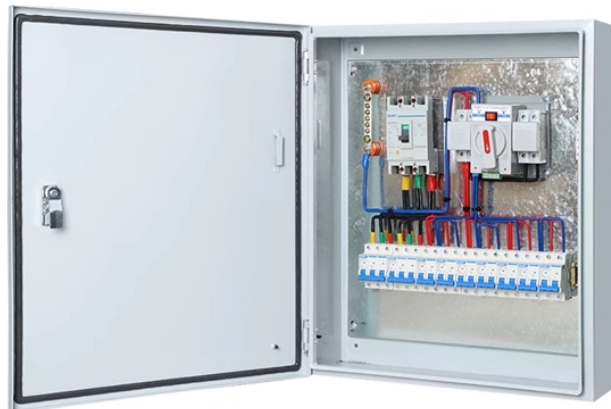


SC Cold Joint Kit



SC Cold Joint Kit



Our cold shrink joints are made of a single piece of silicone rubber (pre-expanded ...



For versatile and dependable cable terminations, the cold shrink cable jointing kit, which includes high-performance cold shrinkable cable joints, is a preferred choice among professionals.



Cold shrink joint for 1-core cables with Al/Cu conductor, polymeric insulation and Cu-wire screen. The kit contains components for one cable core. Mechanical connectors are included in the kit.



REPL range of Cold Shrinkable Joints are suitable for installations on medium voltage cables up to 36kV. The Joint consists of a moulded silicon rubber body with integrated central faraday cage and ...



WOER offers premium cold shrink jointing kits including LV 1-5 core, MV 1-core & 3-core options, plus cast resin straight-through and branch joints. Get your reliable cable solutions today!



Certification & Selection Guide for 3MTM Cold Shrink Terminations and Joints To determine the appropriate kit for your intended application, please submit your cable specifications to 3M.



Our cold shrink joints are made of a single piece of silicone rubber (pre-expanded on spiral holdouts) that has a high mechanical expansion capability allowing a wide range of applications.



Such as our 11kV Cold Shrinkable 3Cores Straight Through Joint Kits, Cold shrinkage technology, also known as pre-expansion technology, the elastic rubber in the elastic range of pre-support, set into ...



3M Cold Shrink QS1000 11kV straight joints are suitable for the jointing of all common three-core (3core) polymeric insulated (XLPE, EPR, PE) SWA armoured cables up to 11kV. The 3M joint base kit ...



Our Raychem CSJA Cold Shrinkable Single Core Straight Joints are designed to cover a wide range of applications and accommodate various cable and conductor types in the networks. Range-taking ...



We carry these CSJA cold shrinkable joints for 15 kV through 35 kV. You can select to have it without a connector, or with a copper or aluminium mechanical ShearBolt connector.

Contact Us

For more information, pricing, or custom network solutions, please contact us:

Website: <https://hashherbcafe.co.za>

Email: hello@hashherbcafe.co.za

Phone: +27 63 814 7295

Address: 15 Galaxy Road, Linbro Business Park, Johannesburg, 2065, South Africa

This document is for informational purposes only. Specifications subject to change without notice.

