

Romanian FOB Vertical Cavity Surface Emitting Laser SFP



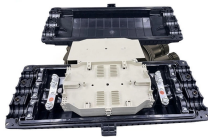
Romanian FOB Vertical Cavity Surface Emitting Laser SFP



In this work, we demonstrate for the first time to our knowledge a circularly polarized, PCLC-based, topological VCSEL by juxtaposing two 1D optical superlattices with opposite potential ...



In this work, we demonstrate for the first time to our knowledge a circularly polarized, PCLC-based, topological VCSEL by juxtaposing two 1D ...



By providing a holistic analysis, this study is a valuable resource for scientists and researchers to help them realize the full potential of VCSELs in advancing optical communication...



VCSELs offer many advantages in fabrication and performance over conventional edge-emitting lasers where light is emitted on one or two edges of the chip. In this example, we present how to build the ...



VCSELs offer many advantages in fabrication and performance over conventional edge-emitting lasers where light is emitted on one or two edges of the chip. In ...



A vertical cavity surface emitting laser, comprising: light-emitting units (20) arranged in an array, wherein the light-emitting units arranged in an array are located on a surface of a substrate (10); a first ...



This unique structure enables VCSELs to emit light perpendicular to the surface, making them highly efficient and suitable for various applications, including optical communication and sensing.



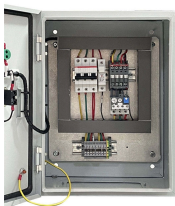
Contrary to the conventional Fabry-Perot edge-emitting semiconductor lasers, his invention comprises a short laser cavity less than 1/10 of the edge-emitting lasers vertical to a wafer surface.



Lasermate offers a comprehensive selection of VCSELs (Vertical-Cavity Surface-Emitting Lasers) designed for high-performance data communication and sensing applications.



Vertical cavity surface-emitting lasers (VCSELs) are a monolithic kind of semiconductor lasers with beam emission perpendicular to the wafer surface.



VCSEL laser is a surface-emitting semiconductor light source that emits laser beams in a direction perpendicular to its top surface. Its major application fields are LiDAR systems, telecom, 3D ...



A specific photonics technology that shows great promise for high speed intra-satellite data transfer applications is the Vertical Cavity Surface Emitting Laser diode (VCSEL). It is a semiconductor ...

Contact Us

For more information, pricing, or custom network solutions, please contact us:

Website: <https://hashherbcafe.co.za>

Email: hello@hashherbcafe.co.za

Phone: +27 63 814 7295

Address: 15 Galaxy Road, Linbro Business Park, Johannesburg, 2065, South Africa

This document is for informational purposes only. Specifications subject to change without notice.

