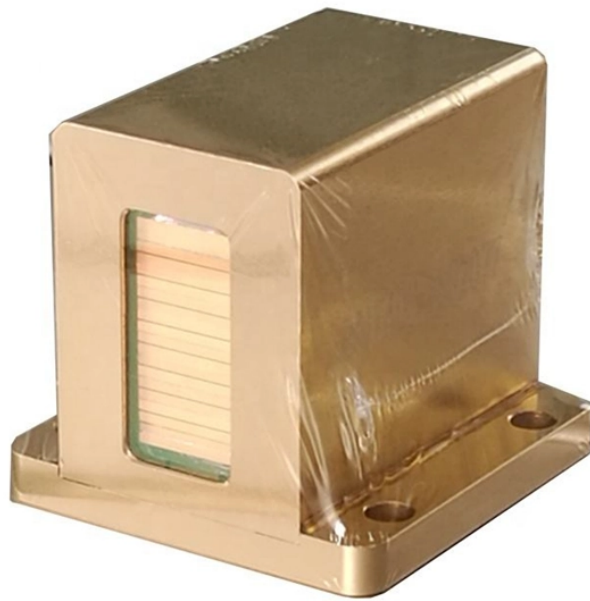


Requirements for qualified electrical distribution boxes on construction sites



Requirements for qualified electrical distribution boxes on construction



Get answers to common questions about temporary wiring in construction, based on rules from the Occupational Safety and Health Administration (OSHA).



Metal raceways, cable armor, and other metal enclosures for conductors shall be metallically joined together into a continuous electric conductor and shall be so connected to all boxes, fittings, and ...



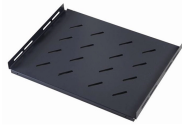
Sections 1926.402 through 1926.408 contain installation safety requirements for electrical equipment and installations used to provide electric power and light at the jobsite.



Follow these steps to ensure proper safety procedures are met when working with or around temporary power. GFCI protection is required for all 125-volt, 15-, 20-, and 30-ampere receptacle outlets. Listed ...



Learn what OSHA requires for temporary wiring on construction sites, from grounding and GFCI protection to overhead clearances and employer liability.



Whether you need an industrial portable power station, a complete jobsite power station, or help managing temporary wiring and distribution, this will help you stay compliant with all the ...



Temporary Power Regulations in Construction This document discusses requirements for installing temporary power at construction sites according to OSHA, NFPA, NECA, and product standards.



Specific requirements for overcurrent protective devices (OCPDs) are also outlined to enhance safety. The NFPA 70, Article 590, plays a crucial role in ensuring the safety of temporary ...



All 120-volt, single-phase, 15- and 20-ampere receptacles shall be of the grounding type and their contacts shall be grounded by connection to the equipment grounding conductor of the circuit ...



Learn how to install a distribution box safely and correctly. Covers wiring, placement, standards, and expert tips for a compliant setup.

Contact Us

For more information, pricing, or custom network solutions, please contact us:

Website: <https://hashherbcafe.co.za>

Email: hello@hashherbcafe.co.za

Phone: +27 63 814 7295

Address: 15 Galaxy Road, Linbro Business Park, Johannesburg, 2065, South Africa

This document is for informational purposes only. Specifications subject to change without notice.

