

Requirements for cables in lighting distribution boxes



Overview

Check for proper IP/NEMA ratings and material quality. Ensure safe placement: install in dry, accessible areas with good ventilation and at appropriate height (typically ~1. Practice good wiring: secure grounding, neat cable management, proper insulation, and correct wire gauge. Metal raceways, cable armor, and other metal enclosures for conductors shall be metallicity joined together into a continuous electric conductor and shall be so connected to all boxes, fittings, and cabinets as to provide effective electrical continuity. Article 314 applies to: These. icle 110 sets the stage for how you'll implement the rest of the NEC. This article contains a few of the most important and yet neglected ire?

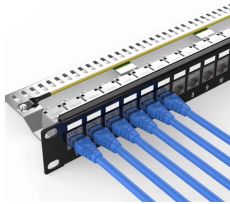
– What's the right working clearance for a given icle, you're building your foundation for correctly applying the NEC. The article includes table references that guide the electrician in the selection of the proper box size necessary to safely accommodate electrical service requirements. The box capacity table shown (page A-5) is reproduced in part from the NEC® as a quick reference and. The National Electrical Code (NEC) requirements might

seem like bureaucratic red tape, but they're more like the safety rails that keep everything running smoothly and prevent dangerous surprises. "Getting your distribution box installation right isn't just about passing inspection - it's about.

Requirements for cables in lighting distribution boxes



Distribution box installations must comply with National Electrical Code (NEC) requirements in the United States, which specify installation methods, grounding requirements, and protective device ...



NEC Article 314 establishes requirements for the installation and use of electrical boxes, conduit bodies, fittings, and handhole enclosures.



Subpart D—Building Design
Requirements—Electric Systems and Equipment §
434.401 Electrical power and lighting systems.
Electrical power and lighting systems, other than those systems or ...



The work shall include unloading, storing, unpacking, fixing of all equipment, routing and laying of conduits/cables, wiring, termination, testing and commissioning of all the equipment of lighting system.



Feeders shall originate in a distribution center. The conductors shall be run as multiconductor cord or cable assemblies or within raceways; or, where not subject to physical damage, they may be run as ...



Learn how to install a distribution box safely and correctly. Covers wiring, placement, standards, and expert tips for a compliant setup.



(3) Support Fittings Fill. Where one or more luminaire studs or hickey are present in the box, a single volume allowance in accordance with Table 314.16(B) shall be made for each type of fitting based on ...



CAUTION: It's very dangerous to service energized parts in the first place, and it's unacceptable to be subjected to additional dangers by working around bicycles, boxes, crates, appliances, and other ...



The National Electrical Code (NEC) requirements might seem like bureaucratic red tape, but they're more like the safety rails that keep everything running smoothly and prevent dangerous surprises.



In short, when wiring the lighting distribution box, appropriate wires and terminals should be selected, and the wiring should be carried out in strict accordance with the national electrical safety standards.

Contact Us

For more information, pricing, or custom network solutions, please contact us:

Website: <https://hashherbcafe.co.za>

Email: hello@hashherbcafe.co.za

Phone: +27 63 814 7295

Address: 15 Galaxy Road, Linbro Business Park, Johannesburg, 2065, South Africa

This document is for informational purposes only. Specifications subject to change without notice.

