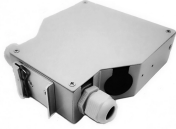


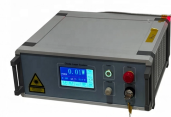
Reliable power distribution automation equipment



Reliable power distribution automation equipment



Discover our medium voltage switchgear and energy automation solutions for safe, reliable, and sustainable MV networks.



From primary equipment to control centers, Hitachi Energy's comprehensive portfolio of distribution automation solutions enables utilities to see what is happening inside the distribution grid, ensuring ...



Pacemaker Energy provides solutions and services for Power Distribution Automation, including the design and implementation of systems to enhance the efficiency and reliability of power distribution ...



Distribution automation (DA) is a family of technologies, including sensors, processors, information and communication networks, and switches, through which a utility can collect, automate, analyze, and ...



DA involves the integration of intelligent devices, communication networks and software applications to automate various tasks on the power distribution grid. This allows utilities to respond more quickly ...



Low-voltage power distribution & controls systems
Improve reliability, increase efficiency and enhance safety with a broad portfolio of low-voltage electrical equipment that distributes, monitors and ...



Improve the reliability and availability of power distribution grids. Siemens Distribution Automation functionality ranges from monitoring to fully automated applications, including FLISR (fault location, ...



Choose from our selection of distribution automation products to improve system reliability, ensure safety, and significantly decrease installation time.



With our extensive inventory of electrical equipment and components, we are the go-to choice for businesses seeking reliable and effective solutions for their electrical power needs.



Utilities deploy distribution automation to reduce outage duration, improve feeder reliability metrics, and control switching operations under fault conditions. The technology combines field sensors, intelligent ...

Contact Us

For more information, pricing, or custom network solutions, please contact us:

Website: <https://hashherbcafe.co.za>

Email: hello@hashherbcafe.co.za

Phone: +27 63 814 7295

Address: 15 Galaxy Road, Linbro Business Park, Johannesburg, 2065, South Africa

This document is for informational purposes only. Specifications subject to change without notice.

