

## Regulations and Requirements for Cable Installation in Cable Trays



### Overview

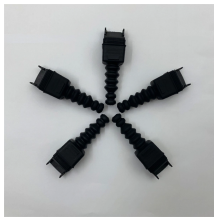
The National Electrical Manufacturers Association (NEMA) also publishes three consensus standards that apply to the proper manufacture and installation of cable trays: ANSI/NEMA-VE 1-1998, Metal Cable Tray Systems; NEMA-VE 2-1996, Metal Cable Tray Installation . The National Electrical Manufacturers Association (NEMA) also publishes three consensus standards that apply to the proper manufacture and installation of cable trays: ANSI/NEMA-VE 1-1998, Metal Cable Tray Systems; NEMA-VE 2-1996, Metal Cable Tray Installation . This guide covers the critical steps, from selecting the right electrical cable tray and performing accurate cable fill calculations to managing a safe cable pull through and ensuring all bonding and grounding requirements are met. For licensed electricians, mastering these principles is essential. Grounding & Bonding Requirements Grounding is one of the most critical NEC considerations when installing metallic cable trays. To comply with code requirements and ensure system safety, metallic trays must be electrically continuous, properly bonded at all splice points, and securely connected to. Recognize electrical cable tray misuse that can lead to electric shock and arc-flash/blast events and fires caused by overheating. The use and installation of

cable trays is covered by legally enforceable OSHA regulations in 29 CFR 1910. Cable tray is the preferred wiring method for industrial facilities, data centers, and large commercial buildings where routing dozens or

## Regulations and Requirements for Cable Installation in Cable Trays



This guide covers the cable tray types and their appropriate applications, the fill rules for each configuration, ampacity derating requirements, separation of power and signal cables, and the ...



Cable tray installation must comply with specific technical standards to ensure electrical safety, system reliability, and long-term maintainability. This document ...



Master NEC Article 392 with our comprehensive guide. Learn essential cable tray requirements for installation, grounding, and fill capacity to ensure full electrical compliance.



Step-by-step instrumentation cable tray installation guide with safety tips, standards, inspections, and downloadable Excel checklist.



Installation of Cable in Cable Trays ensures proper routing, cable management, NEC compliance, grounding, fire safety, and load capacity.



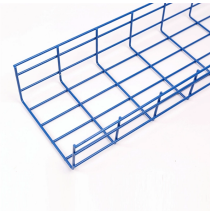
This article provides a comprehensive framework that governs various aspects of cable tray installations, including the types of cables that are deemed acceptable for use, requirements for ...



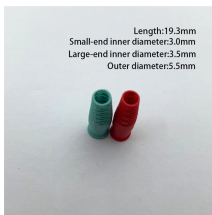
This article provides a comprehensive framework that governs various aspects of cable tray installations, including the types of cables that are deemed acceptable for use, requirements for ...



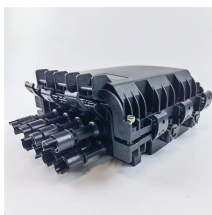
This article explains the main requirements and good practices for cable tray systems, including tray types, materials, loading, supports, bonding, cable selection, and installation details.



A professional guide to installing electrical cable tray systems per NEC Article 392. Covers support, securing cables, and fill calculations.



Core rules for selecting, installing, grounding, and filling cable trays—clearances, materials, separation, and bonding explained.



Provide information regarding the hazards of overloaded cable trays; Identify specific Occupational Safety and Health Administration (OSHA) regulatory requirements and National Electrical Code® ...



Cable tray installation must comply with specific technical standards to ensure electrical safety, system reliability, and long-term maintainability. This document outlines the key requirements for cable tray ...

## Contact Us

For more information, pricing, or custom network solutions, please contact us:

Website: <https://hashherbcafe.co.za>

Email: [hello@hashherbcafe.co.za](mailto:hello@hashherbcafe.co.za)

Phone: +27 63 814 7295

Address: 15 Galaxy Road, Linbro Business Park, Johannesburg, 2065, South Africa

This document is for informational purposes only. Specifications subject to change without notice.

