

## Recommended Pulse High Beam Module



## Recommended Pulse High Beam Module



The built-in pulse picker enables a pulse-on-demand mode, further enhancing operational flexibility. Additionally, the versatility of PHAROS femtosecond lasers can be further extended by a variety of ...



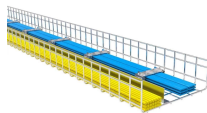
High-Performance Pulsed Diode Lasers for Advanced Defense, Biomedical and Industrial Applications



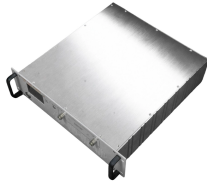
Activates High current relay when High Beams are turned on, used to add large light bars and driving lights without having to install additional switches in the dash.



Within the BAL series, wavelengths between 653 and 1,120 nm are available with output powers between 1 and 19 W in cw mode or even up to 90 W in pulse mode s high pulse energy and fast ...



With wavelengths from 415 to 495 nm, our blue lasers provide unmatched versatility for precise materials processing, superior metal absorption, and high-resolution imaging.



It seems like a lot, but going to beams from pulses will give you 30% more damage at the cost of something like 500% more distributor draw. Overcharged basically turns your pulses into ...



laser beam modulation system can be required or significantly improve performance in many electro-optic applications, each having specific needs. There are plenty of reasons why you should select a ...



To start with you need a bulb that has a DRL mode. Some brands offer this feature through PWM (Pulse width modulation), which is not what you want for a Subaru which just uses a ...



The best part about the pulse is that with it's low rating, it uses minimal power drain and can fire more continuously than the rest of the weapons. That's why it's the "best" weapon choice for the vulture.



Activates High current relay when High Beams are turned on, used to add large light bars and driving lights without having to install additional switches in the dash.

## Contact Us

For more information, pricing, or custom network solutions, please contact us:

Website: <https://hashherbcafe.co.za>

Email: [hello@hashherbcafe.co.za](mailto:hello@hashherbcafe.co.za)

Phone: +27 63 814 7295

Address: 15 Galaxy Road, Linbro Business Park, Johannesburg, 2065, South Africa

This document is for informational purposes only. Specifications subject to change without notice.

