

## Ranking of Manufacturers of Automated Cold Joint Equipment



### Overview

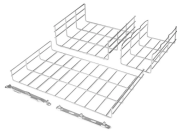
This Analysis is based on comprehensive primary and secondary research on the corporate strategies, financial and operational performance, product portfolio, market share and brand analysis of all the leading Cold Chain Equipment industry players. Cold Chain Equipment Business Information that were considered market leaders, vendors, suppliers in their respective landscapes are dynamic, and success depends on a company's ability to adapt to changing circumstances with respect to regions and countries. Companies that successfully integrate. The Cold Chain Packaging Automation Equipment Market Report is Segmented by Equipment Type (Automated Case Packers, Robotic Palletizers, AS/RS, Cold-Rated Conveyors, and More), Temperature Range (Refrigerated, and More), End-User Industry (Pharmaceuticals, and More), Packaging Type (Insulated. According to a research report published by Spherical Insights & Consulting, The Global Medical Cold Chain Storage Equipment Market Size is projected to Grow from USD 3. 38 Billion by 2035, at a CAGR of 5. 26% during the forecast period of 2025-2035. Description According. Macrodyne Technologies, Inc. is estimated to have 10-49 employees. Design, fabrication and installation of monolithic frame and down-

stroking hydraulic coldforming presses. Available in 62 x. Each year, the Global Cold Chain Alliance (GCCA) publishes a list of the largest temperature-controlled warehousing and logistics providers in the world - the Global Top 25 List. Accompanying the Global Top 25 are the breakdown lists of largest operators in the North America, Latin. Also, please take a look at the list of 96 automated assembly system manufacturers and their company rankings.

## Ranking of Manufacturers of Automated Cold Joint Equipment



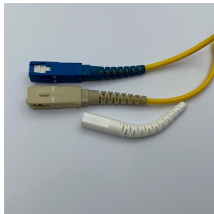
The cold chain equipment market, encompassing freezers, refrigerators, cold rooms, temperature sensors, and monitoring systems, is on a ...



Choosing the right automatic cold saw vendor can significantly impact your manufacturing efficiency and product quality. With numerous players vying for attention, understanding their...



Accompanying the Global Top 25 are the breakdown lists of largest operators in the North America, Latin American/Caribbean, and European regions. The lists are determined by capacity of ...



Custom manufacturer of coldformed and machined parts for automotive, refrigeration and small engine industries. Products include piston pins, punches, dies, sleeves, gear, oil pump and ...



As food manufacturers seek reliable partners for automated process equipment, beverage processing machinery, and commercial food processing equipment, the choice of supplier becomes ...



Accompanying the Global Top 25 are the breakdown lists of largest operators in the North America, Latin American/Caribbean, and European regions. The lists are ...

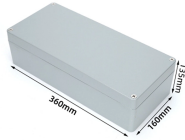


ABB Ltd., BluePrint Automation BV, Brenton - A ProMach Brand, Cama Group S.p.A. and Cold Chain Technologies LLC are the major companies operating in this market.



This section provides an overview for automated assembly systems as well as their applications and principles. Also, please take a look at the list of 96 automated assembly system manufacturers and ...



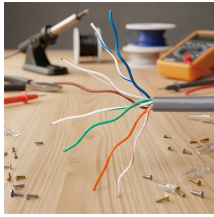
The global cold chain equipment industry is witnessing dynamic competition driven by technological innovation, sustainability initiatives, and the growing demand for AI-integrated logistics solutions.



Chapter 2: Detailed analysis of Joint Cold Therapy Device manufacturers competitive landscape, price, sales and revenue market share, latest development plan, merger, and acquisition information, etc.



Are you ready to discover more about the Global Medical Cold Chain Equipment Market? The report provides an in-depth analysis of the leading companies operating in the global medical cold chain ...



The cold chain equipment market, encompassing freezers, refrigerators, cold rooms, temperature sensors, and monitoring systems, is on a global growth fueled by factors like rising food ...



Are you ready to discover more about the Global Medical Cold Chain Equipment Market? The report provides an in-depth analysis of the leading companies ...

## Contact Us

For more information, pricing, or custom network solutions, please contact us:

Website: <https://hashherbcafe.co.za>

Email: [hello@hashherbcafe.co.za](mailto:hello@hashherbcafe.co.za)

Phone: +27 63 814 7295

Address: 15 Galaxy Road, Linbro Business Park, Johannesburg, 2065, South Africa

This document is for informational purposes only. Specifications subject to change without notice.

