

Price list for 2 5G erbium-doped fiber amplifiers for data center interconnects



Price list for 2 5G erbium-doped fiber amplifiers for data center inte



Shop our collection of EDFA erbium-doped fiber amplifiers: 1030-2054nm, -14 to +15dBm input, up to 40 W output. SLM narrow linewidth options. Browse at RPMC.



EDFA amplifiers are a cost effective choice for light amplification on DWDM projects in which fiber spans are too long to be achieved strictly with conventional optical transceivers. EDFA light amplifiers are ...



Enhance your Fiber Optic Equipment setup with our premium Erbium Doped Fiber Amplifier Price. Identify leading distributors by their ability to offer competitive wholesale prices and insider ...



EDFA-C2-22-R optilab from \$4,720.00 Low Noise Pre-amp Erbium-Doped Fiber Amplifier, 50 dB Gain, Narrowband, Module EDFA-PA-LN-NB-M optilab from \$6,620.00



The global erbium doped fiber amplifier (EDFA) market is projected to reach \$3.2 billion by 2028, growing at a CAGR of 10.5%. Demand is driven by escalating data traffic, 5G deployments, ...



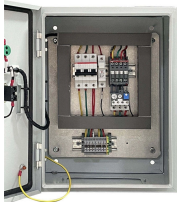
An Erbium-Doped Fiber Amplifier (EDFA) is a critical device in modern optical communication systems, enabling long-distance data transmission by amplifying optical signals without converting them to ...



281 Optical Amplifiers from 27 manufacturers listed on GoPhotonics. Search by specification. Selected filters - Country : global, Samplifier Type : Erbium-Doped Fiber Amplifier (EDFA), Page-1



Erbium Doped Fiber Amplifier SIMTRUM Provides Erbium doped Fiber Amplifier (EDFA) for fiber lasers and fiber optic communication consisting of C- or L- Band signal light.



The Emcore PONA Series Optical Amplifier is a high-power C-band EDFA engineered to boost optical signals in long-haul, CATV, FTTH, and DWDM transmission networks.



This erbium-doped fiber amplifiers buying guide provides technical background, comparison of major types, selection criteria, and an overview of suppliers.

Contact Us

For more information, pricing, or custom network solutions, please contact us:

Website: <https://hashherbcafe.co.za>

Email: hello@hashherbcafe.co.za

Phone: +27 63 814 7295

Address: 15 Galaxy Road, Linbro Business Park, Johannesburg, 2065, South Africa

This document is for informational purposes only. Specifications subject to change without notice.

