

## Preventing accidental contact with distribution box switches



## Preventing accidental contact with distribution box switches



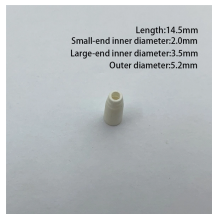
A readily accessible, manually-operated switch shall be provided for each incoming service or supply circuit. Switches shall be of the externally operable type mounted in an enclosure listed...



You'll find isolation switches in distribution boxes, solar combiner boxes, industrial panels, and many other electrical systems where safety is important. Their role is simple but critical: prevent ...



They effectively prevent accidental contact with live parts. Thus, this containment significantly reduces the risk of electrical shocks or fires, ensuring the overall safety and reliability of the power distribution ...



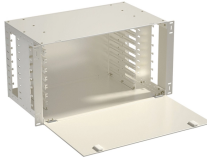
Any openings in such partitions or screens shall be so sized and located that persons are not likely to come into accidental contact with the live parts or to bring conducting objects into contact with them.



Isolation switches must be securely mounted in appropriate enclosures that provide protection against accidental contact, environmental ingress, and physical damage.



A recent safety switch innovation is the double-door safety switch, which adds an extra level of protection by providing an internal barrier between upper and lower compartments, therefore ...



To avoid the risk of accidental shock, live electrical components operating at 50 volts or more must be guarded with covers or other permanent barriers to prevent accidental contact by ...



The electrical isolation switch is a critical component for safety and maintenance in modern electrical systems. Whether you're managing a residential grid or an industrial plant, understanding what is an ...



Temporary protective grounds shall be placed at such location and arranged in such a manner as to prevent each employee from being exposed to hazardous differences in electrical potential.



They effectively prevent accidental contact with live parts. Thus, this containment significantly reduces the risk of electrical shocks or fires, ensuring the overall ...



Safety: By containing electrical connections and components within secure enclosures, these boxes help prevent accidental contact, reducing the risk of electric shock to building occupants and maintenance ...

## Contact Us

For more information, pricing, or custom network solutions, please contact us:

Website: <https://hashherbcafe.co.za>

Email: [hello@hashherbcafe.co.za](mailto:hello@hashherbcafe.co.za)

Phone: +27 63 814 7295

Address: 15 Galaxy Road, Linbro Business Park, Johannesburg, 2065, South Africa

This document is for informational purposes only. Specifications subject to change without notice.

