

## Precautions for Comoros Optical Power Meters



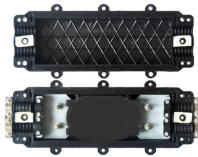
### Overview

Avoid burning the power sensor by having some idea of the signal level to be measured with the sensor. Properly apply a DC block, limiter or external attenuator. CAL POWER METER. " To obtain maximum performance from the instrument, please read this manual first, a keep it handy for ed during shipping. If damage is evi-dent, or if it fails to operate according to the specifications, con-tact your dealer or H prior to shipment. The unit of optical power is dbm. Usually the luminous is less than 0dbm. The minimum optical power that the receiving end can receive is called sensitivity, and the large optical power that can. oration, are to be maintained in strict confidence.

## Precautions for Comoros Optical Power Meters



Power-supply spikes and surge current as well as static-electric charges can cause product aging or damage. This note explains the basic precautions for assuring the safety of optical devices as well as ...



Avoid burning the power sensor by having some idea of the signal level to be measured with the sensor. Before turning on or turning off the connected equipment or the DUT, reduce the signal level to the ...



This page explains the basic precautions for assuring the safety of optical devices as well as long-term stability.



Optical power meter fiber test TX and RX must be tested separately. In the case of single fiber, because only one fiber is used, of course it only needs to be tested once.



The understanding and use of the practices outlined in this paper are highly recommended in order to extend the power meter and power sensor instrumentation service life and reduce downtime and ...



All power meters and sensors must be properly stored. Performance of equipment may be impaired by exposure to extremes of humidity, temperature, dust, and other conditions.



Linearity electronics can affect the overall system linearity. The power meter linearity is characterized and specified to know the measurement accuracy and linearity over the full dynamic range. For accurate ...



When the 3664 is running on AC power, the auto-power-save function is automatically turned OFF and the function is not available. While power is supplied from the battery, when the power is turned ON, ...



5 5 6 7 Introduction The RP460 Optical Power Meter is an ultra low cost, and compact power meter used for verifying both absolute and relative power across any given fiber. This document will serve ...



Here's a comprehensive guide to the 15 best optical power meters for fiber techs in 2025, offering expert insights and reviews to help you find the perfect tool for your needs.



In a short-distance local area network (LAN), where the endpoints are within walking or talking, technicians can successfully use an economical combination optical multimeter at either end, ...

## Contact Us

For more information, pricing, or custom network solutions, please contact us:

Website: <https://hashherbcafe.co.za>

Email: [hello@hashherbcafe.co.za](mailto:hello@hashherbcafe.co.za)

Phone: +27 63 814 7295

Address: 15 Galaxy Road, Linbro Business Park, Johannesburg, 2065, South Africa

This document is for informational purposes only. Specifications subject to change without notice.

