

# **Power Consumption of 10 Gigabit Optical Port Module**



## Power Consumption of 10 Gigabit Optical Port Module



In a typical 10G network, 10GBASE-T RJ45 copper modules consume significantly more power because they rely on complex DSP chips to ...

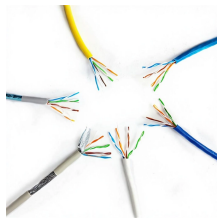


In this article, we will break down the key factors influencing TX/RX power, explain how to calculate the optical power budget, and provide actionable insights for optimizing your network's ...

Length:14.5mm  
Small-end inner diameter:2.0mm  
Large-end inner diameter:3.5mm  
Outer diameter:5.2mm



10GB SFP modules are preferred in data centers and performance-sensitive environments due to lower latency and power consumption. 10GBASE-T is mainly used where existing copper cabling must be ...



When connecting 25G-MR-XSR/LR optics to legacy fixed rate 10G optics, attenuation may be required to ensure the optical input power to the 10G optical module is within allowable limits.



SFP modules support very low EMI and excellent ESD protection. Featuring low power consumption, these fiber modules are ideal for enterprise LAN networks and other optical links.



10GBASE-T consumes between 2 to 5 watts per port depending on cable length. In high-density environments, this leads to higher cumulative energy and cooling demands. SFP+ ...



This feature gives the end user the ability to monitor real-time parameters of the SFP, such as optical output power, optical input power, temperature, laser bias current, and transceiver supply voltage.



10GBASE-T consumes between 2 to 5 watts per port depending on cable length. In high-density environments, this leads to higher cumulative energy ...



In the 10GBase-T power consumption, the supermicro's motherboard already comes with 10GBaseT's port. A transceiver consumes  $\leq 2.9W$  (3). And 10GBaseT switch (CRS312-4C+8XG ...



There are more types of SFP-10G-T 10GbE modules produced by different manufacturers in the market, and here is a comparison test on the power consumption issue that ...



This lets you monitor parameters of the SFP, such as optical output power, optical input power, temperature, laser bias current, and transceiver supply voltage, in real time.



With integrated XGS-PON optics, MAC, and Ethernet switching capabilities, Cisco PON ONTs help network operators optimize the network's Total Cost of Ownership (TCO) by reducing ...

## Contact Us

For more information, pricing, or custom network solutions, please contact us:

Website: <https://hashherbcafe.co.za>

Email: [hello@hashherbcafe.co.za](mailto:hello@hashherbcafe.co.za)

Phone: +27 63 814 7295

Address: 15 Galaxy Road, Linbro Business Park, Johannesburg, 2065, South Africa

This document is for informational purposes only. Specifications subject to change without notice.

