

Polarization-maintaining fiber for direction identification



Overview

, Zing™ fiber) is a specialty optical fiber that will guide only one polarization direction, thus polarizing light that is propagated through the fiber. In fiber optics, polarization-maintaining optical fiber (PMF or PM fiber) is a single-mode optical fiber in which linearly polarized light, if properly launched into the fiber, maintains a linear polarization during propagation, exiting the fiber in a specific linear polarization state; there is. In polarization-maintaining single-mode fibers (PM fibers), the fiber symmetry is broken by integrating stress elements in the fiber cladding. The linear. Polarization-maintaining fibers are mostly single-mode fibers, only in rare cases few-mode fibers, and apparently never highly multimode fibers.

Polarization-maintaining fiber for direction identification



Explore how Polarization Maintaining Fibers revolutionize optical technology with unmatched stability, precision, and clarity across various applications.



Overview Principle of operation Polarization crosstalk Designs Applications



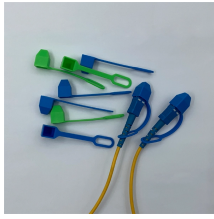
Polarization-maintaining fibers work by intentionally introducing a systematic linear birefringence in the fiber, so that there are two well defined polarization modes which propagate along the fiber with very ...



A polarization-maintaining (PM) fiber is a specialty optical fiber designed to preserve the linear polarization of light launched into it. It achieves this not by eliminating birefringence, but by having a ...



Please note that for coupling into PM fibers, the polarization direction of the laser source must be aligned with the polarization axis of the fiber as well. This procedure is described in detail in .



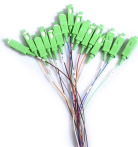
In polarization-maintaining single-mode fibers (PM fibers), the fiber symmetry is broken by integrating stress elements in the fiber cladding. The light is then guided in two perpendicular principle states of ...



Polarization maintaining fiber is defined as a type of single-mode fiber that preserves the polarization state of light during propagation by introducing anisotropic stress in its core, minimizing cross ...



Polarizing (PZ) fiber (i.e., Zing™ fiber) is a specialty optical fiber that will guide only one polarization direction, thus polarizing light that is propagated through the fiber.



One notable development is the polarization-maintaining FBG (PM-FBG), which features artificially induced internal strain, causing birefringence due to the breakdown of circular symmetry. ...



Polarization-maintaining fibers and their applications are reviewed. The classification of high-birefringent fibers and low-birefringent fibers and their fabrication methods and characteristics are discussed in ...



In this article, the latest in FOC's series covering specialty fibers and their fabrication, we discuss polarization-maintaining (PM) fibers and the various approaches used to make them. There ...

Contact Us

For more information, pricing, or custom network solutions, please contact us:

Website: <https://hashherbcafe.co.za>

Email: hello@hashherbcafe.co.za

Phone: +27 63 814 7295

Address: 15 Galaxy Road, Linbro Business Park, Johannesburg, 2065, South Africa

This document is for informational purposes only. Specifications subject to change without notice.

