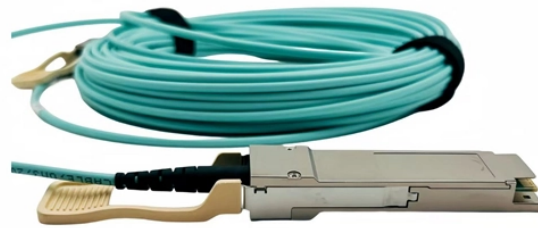


## PoE Switches and NVRs



### Overview

Since the PoE NVR integrates the PoE switch and NVR in the same unit, you can directly connect the IP cameras to this device without using any supporting equipment. The PoE NVR offers comprehensive video storage and management solution for average users to set up the cameras within minutes. It can auto-recognize and power the compatible PoE cameras. Power over Ethernet (PoE) is a technology that allows the power supply equipment (PSE) to transmit power and data simultaneously via a single Ethernet cable to the powered devices (PDs). It's widely used in both commercial and industrial applications, like security camera systems, building access controls, video conference systems and industrial au. It largely depends on which type of PoE you're using. IEEE802.3af/at/bt compliant PoE (aka standard PoE) is inherently safe even when connected to a device that is not designed for PoE use. Before the PSE sends any power to the PDs, it'll send a low-voltage pulse (2V-10V) to the connected PD to verify it's PoE-supported. It will periodically repeat. The

PoE NVR is a video recorder that has a built-in PoE switch. It offers a centralized video control to allow you to store and process the captured footage. Like the PoE switch, the PoE NVR can deliver power and data to the IP cameras at the same time, eliminating the need for installing an external PoE switch. But PoE NVRs available in the market. The PoE switch is a network switch that has PoE features built into it and is able to transmit both power and data through the same network cable to the powered devices within a maximum distance of 100 meters. The PoE switch offers great flexibility for installation in places where no power/network is present, which greatly improves the scalability.

## PoE Switches and NVRs



In-depth analysis of PoE (Power over Ethernet) capabilities in security systems, today we'll be focusing on the use of NVRs (Network Video Recorders) with external PoE switches.



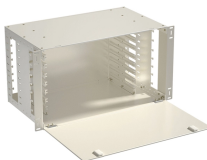
Confused about PoE NVRs and PoE switches for your CCTV system? This guide breaks down the differences to help you make the right choice for your security setup.



However, while you can technically use an NVR as a PoE switch, this approach has critical limitations that compromise scalability, flexibility, and reliability.



In this guide, we'll break down exactly what a PoE switch is, why it's a must for your security system, and how to get one up and running smoothly, ensuring your viewer is always ...



Find out how to minimize cabling by using POE switches on your network. Get helpful tips and best practices in our free guide, written by SCW's installation experts.



Discover a complete guide on the “wiring diagram how to connect PoE switch to NVR”. Learn its benefits, setup steps, and detailed connection instructions.



i-PRO releases new NU Network video recorders, NVRs with a build-in PoE switch for 4ch/8ch/16ch. Not only you don't need prepare PoE switch separately, but with new stylish slim design, you can install ...



Like the PoE switch, the PoE NVR can deliver power and data to the IP cameras at the same time, eliminating the need for installing an external PoE switch. But PoE NVRs available in the ...



Plug the Reolink NVR and the PoE switch into the same router via an Ethernet cable. Then plug the PoE cameras into the PoE switch. In this case, the cameras plugged into the PoE switch will obtain an IP ...



Connecting PoE cameras to an NVR via a PoE switch in 2026 is faster and more efficient than ever, thanks to plug-and-play compatibility and advanced auto-discovery features.

## Contact Us

For more information, pricing, or custom network solutions, please contact us:

Website: <https://hashherbcafe.co.za>

Email: [hello@hashherbcafe.co.za](mailto:hello@hashherbcafe.co.za)

Phone: +27 63 814 7295

Address: 15 Galaxy Road, Linbro Business Park, Johannesburg, 2065, South Africa

This document is for informational purposes only. Specifications subject to change without notice.

