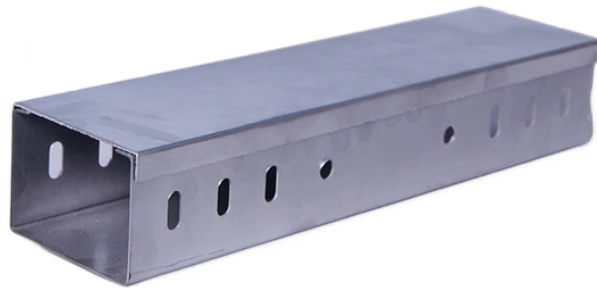




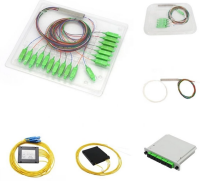


# Plastic Cable Tray Specifications

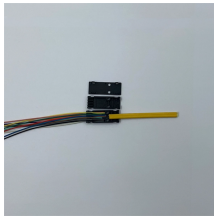


## Plastic Cable Tray Specifications

	<p>When fitting cable trays and their accessories, the products are cut on site to create changes of direction, adjust sections, etc. Damage can also occur during handling; as a result, both the ...</p>
	<p>Explore standard sizes by tray type, understand width and depth limits, and see how to calculate and choose compliant cable tray sizes for real projects.</p>
	<p>MP Husky's cable tray selector for choosing the correct tray type (ladder, solid bottom, perforated, wire mesh) and size based on load, cable type and installation requirements.</p>
	<p>In a metal tray with a bad grounding, or conicide in the middle of 2 crossbeams, is potentially dangerous if it is touched. Due the pvc trays are insulating, these situations are not danger, even if there are a ...</p>
	<p>10 Ft tray large Non perforated model PVCM1 UV material Ultra-violet resistant plastic Insulating Weight</p>



Explore standard sizes by tray type, understand width and depth limits, and see how to calculate and choose compliant cable tray sizes for real projects.



The Legrand PVC cable tray range complies with the requirements of the RoHS Directive, which stipulates the elimination of several substances that are hazardous to the environment and to health.



Selecting the appropriate electrical cable tray dimensions is a critical decision that directly impacts the safety, efficiency, and longevity of any industrial or commercial electrical installation. ...



The work covered under this section consists of the furnishing of all necessary labor, supervision, materials, equipment, tests and services to install complete cable tray systems as shown on the ...



Cable tray length is selected based on the load to be supported, the distance between the supports (also referred to as the span), and handling and installation constraints.



Basor PVC Cable Tray is a non-conductive, non-corrosive, lightweight and impact resistant cable management solution for the simple routing and support of power and data cables. Lightweight and ...

## Contact Us

For more information, pricing, or custom network solutions, please contact us:

Website: <https://hashherbcafe.co.za>

Email: [hello@hashherbcafe.co.za](mailto:hello@hashherbcafe.co.za)

Phone: +27 63 814 7295

Address: 15 Galaxy Road, Linbro Business Park, Johannesburg, 2065, South Africa

This document is for informational purposes only. Specifications subject to change without notice.

