

Pipeline Tray Support Removal Plan



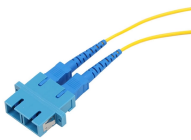
Pipeline Tray Support Removal Plan



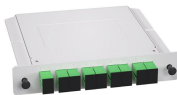
Removal of a two-tonne pig launch tray from a 48" high pressure gas transmission pipeline.



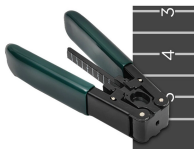
This method statement is made to describe the sequence of activities involved for removal of Cladding / insulation, removal of tubing / instruments / gauges, demolition of lines PR2341



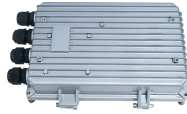
Learn why trenchless pipeline removal is especially ideal for applications where it isn't possible to remove pipelines via open-cut excavations.



The support ring is not normally extended into the downcomer area and tray perforations needs to be avoided over the support ring area. Support ring width is usually between 40 to 90 mm. Trays are ...



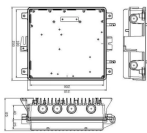
Dismantling procedures are described for electrical wires, water lines, fire protection systems, sewer lines, ducts, and providing a safe staging area. The objective is to clean up areas before installing ...



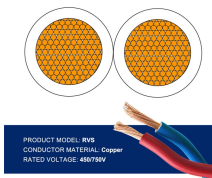
OSHA has a bulletin - the bulletin has a bit about how you can't support water pipes, air lines etc. There's more info than you probably wanted here. The way you do anything is the way you ...



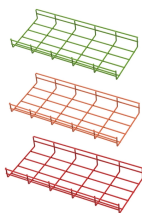
Learn why trenchless pipeline removal is especially ideal for ...



Hilti's cordless bandsaw is an appropriate tool for cutting low height, thin metal products such as cable ladders and trays and support channels. Accurate cutting is achieved with low noise and debris.



Dismantling procedures are described for electrical wires, water ...



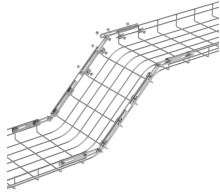
This Tailings Pipeline Removal Plan (Plan) has been prepared to provide a description of the tailings pipeline decommissioning and demolition process at the Questa Mine.



This method statement is made to describe the sequence of activities involved for ...



Where space is available, it may be easier to install the support trays on the PureFlow tubing while on the floor and then install the tubing with trays attached onto the hangers.



TPR works by cutting the pipe section to be removed with a helical cut from inside the pipe, using Enereco's cutting machine which applies a mixture of water and sand under high pressure (materials ...



You can use the Support Designer to create supports for pipes, cable trays, and air ducts. You can add, modify, and remove standard supports and custom supports, and manage the drawings of custom ...

Contact Us

For more information, pricing, or custom network solutions, please contact us:

Website: <https://hashherbcafe.co.za>

Email: hello@hashherbcafe.co.za

Phone: +27 63 814 7295

Address: 15 Galaxy Road, Linbro Business Park, Johannesburg, 2065, South Africa

This document is for informational purposes only. Specifications subject to change without notice.

