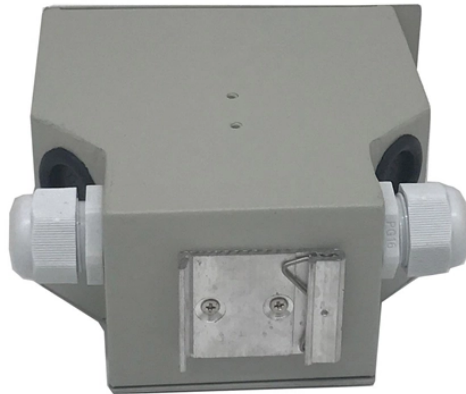


## Photovoltaic Grid-Connected Distribution Box Solution



### Overview

A reliable and efficient power distribution solution designed for photovoltaic grid-connected systems. The GGD cabinet integrates protection, control, measurement, and monitoring functions, ensuring safe, stable, and compliant connection between solar power systems and the grid. A Grid-Connected Distribution Box is an electrical enclosure that houses and protects solar photovoltaic (PV) system components, such as inverters, combiners, and disconnect switches. The photovoltaic distribution box serves as a critical component in modern solar energy systems, acting as the central hub that manages and distributes electricity generated by solar panels. This sophisticated electrical enclosure combines multiple circuit breakers, monitoring devices, and safety features. Photovoltaic systems are connected to the grid using distribution boxes to provide effective protection. The unit is wall-mounted outdoors.

## Photovoltaic Grid-Connected Distribution Box Solution



A reliable and efficient power distribution solution designed for photovoltaic grid-connected systems. The GGD cabinet integrates protection, control, measurement, and monitoring functions, ensuring safe, ...



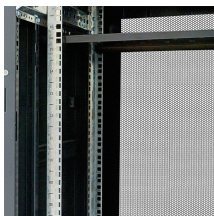
Grid-Connected Distribution Box systems serve as the critical heartbeat of modern solar energy infrastructures. As the central hub for electrical management, this component ensures that ...



PV DC Combiner Box is the core combiner equipment in photovoltaic grid connected power generation systems, designed to achieve efficient collection, safety protection, and stable transmission of DC ...



Learn to choose the best PV combiner box and grid-connected cabinet for your solar project. Optimize safety with YAXU technology.



A Grid-Connected Distribution Box is an electrical enclosure that houses and protects solar photovoltaic (PV) system components, such as inverters, combiners, and disconnect switches. It is an essential ...



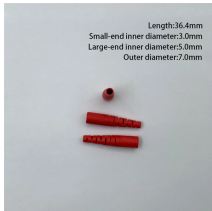
Discover comprehensive photovoltaic distribution box solutions featuring advanced safety protection, intelligent monitoring, and modular scalability for optimal solar energy system performance and ...



Grid-Connected PV Distribution Box allows you to measure the voltage, power, and electrical current of the power grid. It's safe, reliable, and elegantly designed. The unit is wall-mounted outdoors.



The TaiLi photovoltaic grid-connected cabinet is connected to the total output of the photovoltaic system and serves as a distribution device linking the photovoltaic power station and the power grid.



These boxes facilitate the distribution of electricity generated by solar panels and ensure a safe and efficient connection to the grid. The PV distribution box MDX-20 offers a range of features and ...



Elevate your solar power management with the MDX-200 PV Grid-Connected Distribution Box, a premier solution designed for efficiency and durability. Engineered by Moreday, a leader in ...

## Contact Us

For more information, pricing, or custom network solutions, please contact us:

Website: <https://hashherbcafe.co.za>

Email: [hello@hashherbcafe.co.za](mailto:hello@hashherbcafe.co.za)

Phone: +27 63 814 7295

Address: 15 Galaxy Road, Linbro Business Park, Johannesburg, 2065, South Africa

This document is for informational purposes only. Specifications subject to change without notice.

