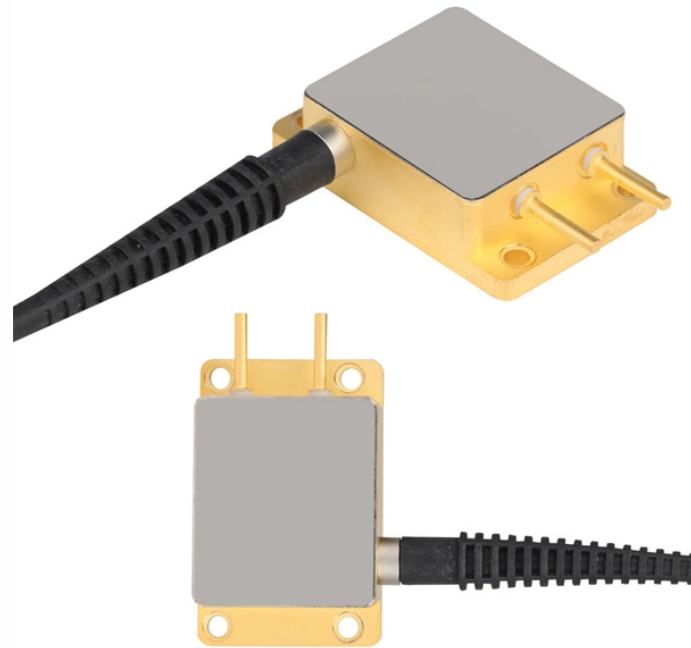


Patch wire splicing and pigtail splicing



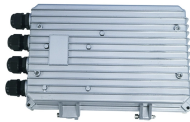
Patch wire splicing and pigtail splicing



Confused about fiber optic pigtails—which connector type, which polish, fusion or mechanical splice? Our guide covers LC vs SC, APC vs UPC, splicing methods, and real-world use ...



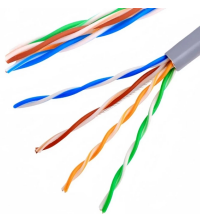
Browse technical details and product comparisons for fiber patch cord accessories—adapters, loopbacks, attenuators, and patch panels. Ideal for installers, data centers, ...



Featuring a unified construction allowing for easy fiber identification and rapid installation, these assemblies are built to exceed all TIA and Telcordia requirements. AFL's pigtail assemblies help ...



Learn about fiber optic patch cords and pigtails—their types, connectors, and uses. Understand key differences for data centers, telecom, and FTTH networks.



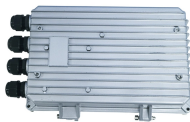
Master the art of fiber termination. Learn how to splice fiber optic pigtails using fusion splicing, follow the color code, and ensure low insertion loss.



Among them, patch cables and pigtails are commonly used for connecting network devices. Understanding the key distinctions between these two types of cables is essential for ...



In fiber optic networks, joining two fibers can be done in two main ways: splicing or using connectors. Both methods work. But ...



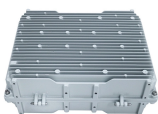
Understand the differences between fiber optic cables, patch cords, and pigtails. Learn standards, applications, and how to choose the right fiber solution



Summary of connection methods: Patch cords are "plug-and-play" temporary workers, while pigtails are "settled down" permanent workers. The jumper connection is completed on-site in ...



Compare fiber optic pigtails and patch cords side by side. Understand key differences in performance, cost, and use cases to make the right choice.



In fiber optic networks, joining two fibers can be done in two main ways: splicing or using connectors. Both methods work. But they serve different purposes and perform differently in specific ...

Contact Us

For more information, pricing, or custom network solutions, please contact us:

Website: <https://hashherbcafe.co.za>

Email: hello@hashherbcafe.co.za

Phone: +27 63 814 7295

Address: 15 Galaxy Road, Linbro Business Park, Johannesburg, 2065, South Africa

This document is for informational purposes only. Specifications subject to change without notice.

