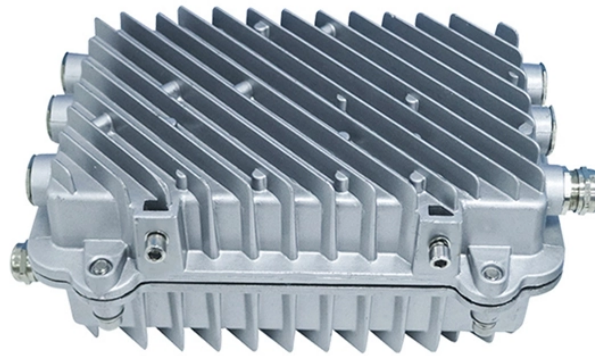


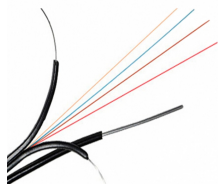
## Passive Optical Network Cabling



## Passive Optical Network Cabling



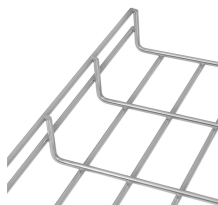
What Is Passive Optical Networking (PON)? Passive optical networking (PON), like active optical networking, uses fiber-optic cabling to provide Ethernet connectivity from a main data source to ...



A passive optical network (PON) is a shared, fiber optic access network that uses unpowered optical splitters to connect many users to a single OLT. PONs deliver high-speed ...



Passive Optical Network (PON) is capable of distributing voice, video and data to the desktop over one singlemode fiber, and offers the benefit of extended transmission distances, as well as easy ...



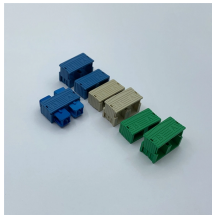
Passive Optical Networks (PON) have become the backbone of high-speed fiber-to-the-home (FTTH) solutions. Network designers and ISPs aiming for efficiency must focus on effective ...



A passive optical network is a type of telecommunications network that uses fiber optic cable to transmit data. It's also lightning quick, which is why a PON is the go-to for high-bandwidth ...



What is PON? A passive optical network, or PON, is a network technology that provides broadband access through optical fiber. It uses a point-to-multipoint topology, allowing a single fiber to serve ...



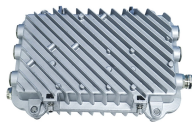
What is a passive optical network (PON)? A passive optical network (PON) is a system commonly used by telecommunications network providers that brings fiber optic cabling and signals ...



Comprehensive guide to Passive Optical Network (PON) technology, covering GPON, EPON, XGS-PON, NG-PON2, and future 50G/100G standards. Learn PON architecture, ...



This article covers every aspect of passive optical LAN, including its definition, key components, merits and demerits, and the necessity of transitioning to such a network.



Radio frequency over glass (RFoG) is a type of passive optical network that transports RF signals that were formerly transported over copper (principally over a hybrid fiber-coaxial cable) over PON.

## Contact Us

For more information, pricing, or custom network solutions, please contact us:

Website: <https://hashherbcafe.co.za>

Email: [hello@hashherbcafe.co.za](mailto:hello@hashherbcafe.co.za)

Phone: +27 63 814 7295

Address: 15 Galaxy Road, Linbro Business Park, Johannesburg, 2065, South Africa

This document is for informational purposes only. Specifications subject to change without notice.

