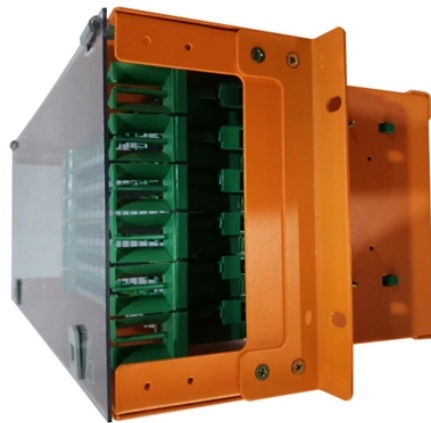

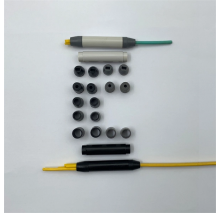


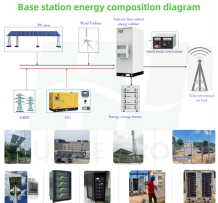
## Parallel cable tray bends





## Parallel cable tray bends

 <p>LoRawan outdoor base station</p>	<p>PARALLEL definition: 1. If two or more lines, streets, etc. are parallel, the distance between them is the same all.... Learn more.</p>
---	--

	<p>Definition of parallel in the Definitions dictionary. Meaning of parallel. What does parallel mean? Information and translations of parallel in the most comprehensive dictionary definitions resource on ...</p>
---	--

 <p>Base station energy composition diagram</p>	<p>Cable Tray Junction Kit, 90 Degree, Carbon Steel Cable Tray Fitting, 90° Junction Kit. Material: Carbon Steel. Finish: Electroplated Zinc. Includes: (1) Hardware for (1) Tee (2) 90° Bends.</p>
---	---

	<p>The Ladder Tray features light, rugged, tubular steel construction. It is designed for mechanical support and strain relief in long runs of cable and creates a smooth gradual bend for cable. Rail and stringer ...</p>
---	---

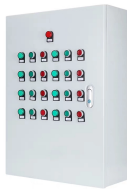
	<p>similar, analogous, parallel mean closely resembling each other. similar implies the possibility of being mistaken for each other.</p>
---	---



Define parallel. parallel synonyms, parallel pronunciation, parallel translation, English dictionary definition of parallel. adj. 1. Being an equal distance apart everywhere: dancers in two parallel rows.



Cable Tray Flat Bends of 45° and 90° bends are available for light, medium and heavy duty cable tray systems. An adjustable bend with 30°, 45°, 60°, 75° and 90° configurations is also available for ...



There is no minimum radius bend for cabletray or low voltage conductors that I'm aware of in the NEC, unless the specific manufacturer establishes a minimum. NEC 392.18 (A) states that ...



A cable tray bend is a connecting element used at points where the cable tray changes direction. It ensures that the cable trays smoothly change face at corners and angled turns along the cable route.



Our company is a trusted manufacturer of high-quality bends for cable trays, engineered to provide seamless transitions and superior support in cable management systems.



Network Cabinet & Rack

Cablobend Systems give you the freedom for true cable tray flexibility. Create bends and drops that you need—without cutting. Perfect for data centers.



RKS-Magic® Quick Install Trough Tray The RKS-Magic® system features our patented Magic Connection System, providing rapid, screwless connections. A comprehensive range of fittings with ...



Cable tray length is selected based on the load to be supported, the distance between the supports (also referred to as the span), and handling and installation constraints.



Any of the imaginary lines parallel to the equator and representing degrees of latitude on the earth's surface.



To place in a position parallel to something else; make parallel. To make conformable to something else; make the same or closely similar in many or all essential particulars.



anything parallel or comparable in direction, course, nature, or tendency to something else: parallels between human sacrifice and the Christian rite of Holy Communion. a case ...



(printing) A character consisting of two parallel vertical lines, used in the text to direct attention to a similarly marked note in the margin or at the foot of a page.



If something has a parallel, it is similar to something else, but exists or happens in a different place or at a different time. If it has no parallel or is without parallel, it is not similar to anything else.



Calculate the minimum required bend radius by multiplying the cable's outside diameter by its bending factor (e.g., 10x for multicore). Then, select a standard tray fitting (300mm, 450mm, etc.) that ...



What is the meaning of "parallel"?

## Contact Us

For more information, pricing, or custom network solutions, please contact us:

Website: <https://hashherbcafe.co.za>

Email: [hello@hashherbcafe.co.za](mailto:hello@hashherbcafe.co.za)

Phone: +27 63 814 7295

Address: 15 Galaxy Road, Linbro Business Park, Johannesburg, 2065, South Africa

This document is for informational purposes only. Specifications subject to change without notice.

