

## Panama Large-Span Bridge



## Panama Large-Span Bridge



Construction of the bridge began in 1959 and in 1962 it opened. The bridge is 1654 meters long and has a span of 344 meters. The bridge was part of the Pan-American Highway until the Centennial Bridge ...



This architectural marvel not only physically bridges the gap between Panama City and the interior of Panama, but it also serves as a symbolic link uniting the continents.



The Bridge of the Americas crosses the Pacific approach to the Panama Canal at Balboa, near Panama City. It was built between 1959 and 1962 by the United States at a cost of US\$ 20 million.



The Pan-American highway now crosses the new Centennial bridge instead of the Bridge of the Americas. The main span of 1,378 feet (420 mtrs) is supported by two towers 609 feet (185.5 ...



Complete guide to Panama's Bridge of the Americas: history, best viewpoints, walking access, photo tips and traffic notes.



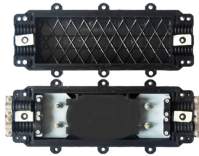
The Bridge of the Americas (Spanish: Puente de las Américas; originally known as the Thatcher Ferry Bridge) is a road bridge in Panama, which spans the Pacific entrance to the Panama Canal.



The Bridge of the Americas connects the Americas across the Panama Canal on International Highway 1. Completed in 1962, the 5,427-foot long bridge features two approach spans and a central tied-arch ...



Centennial Bridge is a cable-stayed bridge in Panama. This is the second bridge that crosses the Panama Canal after the Bridge of the America that connects North ...



Puente Centenario is a slender cable-stayed bridge carrying six lanes of traffic across the Panama Canal. The bridge has one of the longest spans of its kind in Central and South America. The vertical ...



Completed in 1962, this iconic structure was the first permanent bridge to connect North and South America over the Panama Canal, and it still plays a vital role in Panama's national identity and ...



The Second Bridge over the Panama Canal, a 420m (1,378ft) main span concrete cable-stayed bridge, was completed in August 2004 and was officially named Puente Centenario to commemorate 100 ...

## Contact Us

For more information, pricing, or custom network solutions, please contact us:

Website: <https://hashherbcafe.co.za>

Email: [hello@hashherbcafe.co.za](mailto:hello@hashherbcafe.co.za)

Phone: +27 63 814 7295

Address: 15 Galaxy Road, Linbro Business Park, Johannesburg, 2065, South Africa

This document is for informational purposes only. Specifications subject to change without notice.

