

Outline Dimensions of Industrial Switches



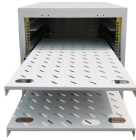
Outline Dimensions of Industrial Switches



The Cisco® Industrial Ethernet (IE) 1000 Series Switches are compact rugged switches aimed to operational technology (OT) users with limited IT network knowledge.



Specific dimensions are given for equipment ratings up to 6,000 amps. Notes provide additional information on cable ways and heights required for molded case circuit breakers.



These switchboards provide the rugged construction and service flexibility necessary in systems for industrial plants, hi-rise complexes, hospitals, and commercial buildings, and are built to UL 891 and ...



Table 28.1-1 summarizes major differences and similarities between the heavy-duty and general-duty type of Eaton's safety switches. In addition to heavy-duty and general-duty applications, we have ...



Refer to NEC Article 430.10. Dimension D = Distance from outside of flange to disconnect switch mounting surface. Copper lugs are standard on all Type TG disconnect switches. * D = Mounting ...



The Cisco® Industrial Ethernet (IE) 1000 Series Switches are ...



Heavy-duty industrial grade switches Product description Single pole, double pole, 3-way, 4-way 15A & 20A, 120/277 V/AC



Provides general guidelines for installing a Rockwell Automation industrial system. Provides declarations of conformity, certificates, and other certification details. You can view or download publications at ...



Unless otherwise specified, a tolerance of ± 0.4 mm applies to all dimensions. Use M4 mounting screws with plane washers or spring washers to securely mount the Switch. Tighten the ...



Special Dimensions and Configurations: Eaton has the ability to offer custom dimensions to suit limited space requirements. Special heights, special depths, widths, and corner sections.



Commercial grade switches feature a galvanneel steel strap, are available in Decora style, and go up to 20 Amp. The ideal solution for demanding applications requiring robust construction and exceptional ...



There is the direction of terminal of two types. The contact form is available in two types, the SPST-NC and the SPST-NO. Operating Force (OF) Max. Same size as J type and long stroke. For pin plunger ...



Units may be molded case breakers, fusible switches, customer metering and surge protective devices. A main molded case breaker or main fusible switch, within the sizes listed for panelboard design, can ...

Contact Us

For more information, pricing, or custom network solutions, please contact us:

Website: <https://hashherbcafe.co.za>

Email: hello@hashherbcafe.co.za

Phone: +27 63 814 7295

Address: 15 Galaxy Road, Linbro Business Park, Johannesburg, 2065, South Africa

This document is for informational purposes only. Specifications subject to change without notice.

