

Outdoor cable tray span



Overview

Some outdoor cable tray installations may have to span anywhere from 20 to 40-feet to cross roads. Extra-long spans are also used to help reduce the required number of expensive outdoor supports. As an industry leader in cable tray, Eaton offers one of the widest ranges of cable management solutions available in the market today with its B-Line series portfolio. The Ladder Tray features light, rugged, tubular steel construction. It is designed for installations without notice. All illustrations, descriptions and technical information included in this document are provided as indications and can cable trays are equivalent. The mechanical and electrical characteristics, tests, certifications, overall quality management, recommendations mentioned. What are the span/support requirements?

The distance between supports will dictate the required load capacity and tray strength.

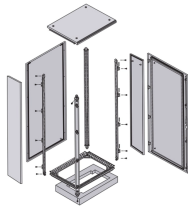
Outdoor cable tray span



Commonly called the Load Class, this defines the load-carrying capability of the tray for a specific support span distance. The design and cost of the cable tray is greatly affected by this designation.



Explore standard sizes by tray type, understand width and depth limits, and see how to calculate and choose compliant cable tray sizes for real projects.



Our engineer's guide helps you choose the right outdoor cable tray based on environment, load, and corrosion resistance. Select HDG, Aluminum, or FRP with confidence.



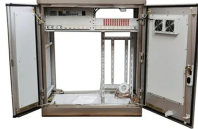
When fitting cable trays and their accessories, the products are cut on site to create changes of direction, adjust sections, etc. Damage can also occur during handling; as a result, both the ...



Span loads are conservatively estimated to be 50% at each end support and 125% at each intermediate support for multiple span continuous ladder trays, uniformly loaded, with equal spans and loads, at a ...



MP Husky's cable tray selector for choosing the correct tray type (ladder, solid bottom, perforated, wire mesh) and size based on load, cable type and installation requirements.



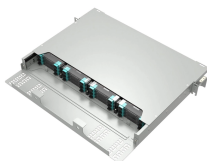
Some outdoor cable tray installations may have to span anywhere from 20 to 40-feet to cross roads. Extra-long spans are also used to help reduce the required number of expensive outdoor supports.



Refers to the approximate height of a cable tray used for specifying. Selecting a specific height will show cable trays with that height, as well as cable tray accessories compatible with that height.



Explore standard sizes by tray type, understand width and depth limits, and see how to calculate and choose compliant cable tray sizes for real projects.



These longer-length cable tray sections are ideal for industrial and commercial applications such as roadway crossings and pipe bridges or lowering installation costs by reducing the number of ...



Explore the essential cable tray support spacing requirements for safe and efficient installations. Learn NEC guidelines for perforated, ladder, and wire mesh trays.

Contact Us

For more information, pricing, or custom network solutions, please contact us:

Website: <https://hashherbcafe.co.za>

Email: hello@hashherbcafe.co.za

Phone: +27 63 814 7295

Address: 15 Galaxy Road, Linbro Business Park, Johannesburg, 2065, South Africa

This document is for informational purposes only. Specifications subject to change without notice.

