

Optical module cannot be used



Overview

If it is not a Huawei-certified optical module, replace it with a Huawei-certified optical module. If the optical module is installed on a GE port, run the display interface `GigabitEthernet x/x/x` command to view port information when the optical module is inserted. Based on typical issues encountered with optical modules in daily switch applications, this document summarizes basic troubleshooting steps for resolving common faults: 1. The. Customers in the use of optical modules will more or less encounter a variety of failure problems, such as optical module model selection is correct, the use of jumper is correct and some common problems, customers have the ability to judge and have a clear solution, but for some of the use of. Dust prevention and cleaning: Details determine success or failure 1) Unused protection: When an optical module is not in use, a dust cap must be installed to prevent dust from entering the port and causing poor contact. 2) Cleaning specification: Use special wiping paper or dust-free cotton swab. An optical module is a critical component in modern optical communication systems, directly affecting transmission stability, network reliability, and operational efficiency. However, during installation and daily operation, various issues may arise.

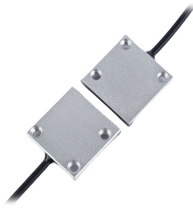
Optical module cannot be used



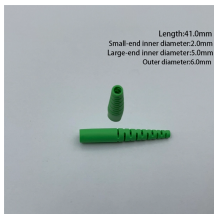
Check whether the transmit optical power and receive optical power of the optical module are within the normal range. If the transmit optical power is beyond the normal range, replace the ...



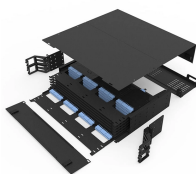
optical module troubleshooting guide covering common faults, compatibility issues, optical link failures, ESD risks, and practical solutions.



For DS110DF111, it is followed by a 10G SFP optical module, but after repeated insertion and removal, the optical module cannot be used, and the link status is displayed down.



As core components of optical communication systems, the proper installation and use of optical modules directly impacts network stability. This article systematically identifies common ...



Solution: Check whether the working parameters, interface information and receiving and sending of the optical module are normal, and then check the optical fiber jumper, or try to replace ...



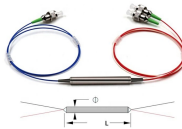
Check the model of the faulty optical module. If it is not a Huawei-certified optical module, replace it with a Huawei-certified optical module. If the optical module is installed on a GE port, run the display ...



Based on typical issues encountered with optical modules in daily switch applications, this document summarizes basic troubleshooting steps for resolving common faults:



The main causes of optical module failure are performance degradation due to ESD (Electrostatic Discharge) damage, and optical link disconnection caused by contamination or damage to the optical ...



Customers in the use of optical modules will more or less encounter a variety of failure problems, such as optical module model selection is correct, the use of jumper is correct and some ...



The main causes of optical module failure are performance degradation due to ESD (Electrostatic Discharge) damage, and optical link disconnection caused by ...



When the optical port of the optical module is up or down frequently, first confirm whether the optical module is abnormal. Check the alarm information of the optical module to check the ...

Contact Us

For more information, pricing, or custom network solutions, please contact us:

Website: <https://hashherbcafe.co.za>

Email: hello@hashherbcafe.co.za

Phone: +27 63 814 7295

Address: 15 Galaxy Road, Linbro Business Park, Johannesburg, 2065, South Africa

This document is for informational purposes only. Specifications subject to change without notice.

