

## Optical Module Grid



## Optical Module Grid



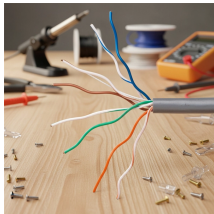
From data centers to telecom, short or long range, optical modules are ideal for large, efficient data transfers. Optical modules can range in size and bandwidth, with the newest generation supporting ...



Explore the essential principles and types of optical modules for fiber optic communication systems.



Explore the working principles, structures, and performance metrics of optical modules, essential components of optical fiber communication systems. Learn ...



Explore the working principles, structures, and performance metrics of optical modules, essential components of optical fiber communication systems. Learn about key indicators such as average ...



Provide a complete design of an optical backplane and the interface requirements between the proposed optical "pin" grid arrays and the backplane for external interconnections.



If an optical module is installed in a running device, you can run the display transceiver command to view parameters of the optical module, including the center wavelength, transmission distance, fiber ...



Optical modules typically have an electrical interface on the side that connects to the inside of the system and an optical interface on the side that connects to the outside world through a fiber optic ...



View the TI Optical module block diagram, product recommendations, reference designs and start designing.



Each module type supports different fiber types (single-mode or multi-mode) and distances. For instance, single-mode fiber modules are used for long-distance communication, while ...



The flawless performance of an optical module depends on the precise execution of its design, with manufacturing tolerances controlled at the micron level. Designing with these tolerances in mind is ...



Explore the essential principles and types of optical modules for fiber optic communication systems.



Explore the ultimate guide to optical modules. Learn types, functions, performance metrics & how to choose the right module for your fiber network.

## Contact Us

For more information, pricing, or custom network solutions, please contact us:

Website: <https://hashherbcafe.co.za>

Email: [hello@hashherbcafe.co.za](mailto:hello@hashherbcafe.co.za)

Phone: +27 63 814 7295

Address: 15 Galaxy Road, Linbro Business Park, Johannesburg, 2065, South Africa

This document is for informational purposes only. Specifications subject to change without notice.

