

Optical Module 120



Optical Module 120



The optical component applied to the ultra-small closed-loop fiber optic gyroscope (FOG) is a special optical module composed of fiber coil and optical devices (Y waveguide, coupler, detector, light ...



Fully compatible with Cisco switches, for Compatible Matrix, please click [here](#). If the quantity shown for US Warehouse isn't enough to fulfill your order, we will directly ship your order from Global ...



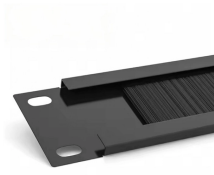
Compare 100G DWDM QSFP28 80km vs 120km modules. Learn differences in optical budget, power, DCM requirements, and best applications.



Compared with single-fiber optical module, it uses two optical fibers (one for transmission and one for reception), has strong compatibility and flexible deployment, and is suitable for short, ...



The 2.5Gbps DWDM SFP module provides high capacity, high bandwidth communication solutions for multiplexed optical networks. This DWDM SFP transceiver module supports a 120km transmission ...



The N1032A is an optical plug-in module for the DCA-X mainframe that includes one optical channel up to 120 GHz.



Compare 100G DWDM QSFP28 80km vs 120km modules. Learn differences in optical budget, power, DCM requirements, and best applications.



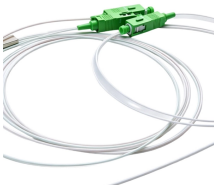
The N1032A is an optical plug-in module for the DCA-X mainframe that includes one optical channel up to 120 GHz. Find out what's included and explore available upgrade options from Keysight. Innovate ...



Fiber-Coupled Optical Receiver Modules feature high sensitivity and high overload power, in addition to wide dynamic ranges. These receiver modules are designed for use in common telecommunication ...



The product accommodates and protects optical splices between the indoor riser cables and the input drop cables on buildings. Capacity to accommodate up to 120 fiber splices on 10 trays with 12 ...



QSFP+ (Quad Small Form-factor Pluggable Plus) optical module: four-channel small hot plugging optical module. The QSFP + optical module supports MPO fiber connectors, which are larger in size than ...

Contact Us

For more information, pricing, or custom network solutions, please contact us:

Website: <https://hashherbcafe.co.za>

Email: hello@hashherbcafe.co.za

Phone: +27 63 814 7295

Address: 15 Galaxy Road, Linbro Business Park, Johannesburg, 2065, South Africa

This document is for informational purposes only. Specifications subject to change without notice.

