

## On-site troubleshooting of distribution network automation terminals



### Overview

Follow a four-step troubleshooting process: start with visual inspection, verify power, isolate faulty components, and validate the entire system to reduce downtime and improve reliability. With the widespread use of DAS, higher requirements for distribution automation terminal on-site testing have been put forward on account of limitations of field working conditions. Based on the requirement of relevant standards, this paper discusses automatic testing exploratory research, by. The handbook describes various power distribution system constructions and elements there-of, technical considerations, distribution automation infrastructure and functionality, communication aspects, special automation applications and life cycle aspects. It also reveals some trends and future. With our on-site support, RTA & IoT provides experienced field engineers who work alongside your maintenance team to troubleshoot, diagnose, and resolve issues in real time. Our experts ensure minimal downtime and optimized system performance through both reactive and preventive support. This forces teams to manage devices manually, which

increases errors and overhead. Compared to the AireOS WLC, the C9800 software has been rewritten from scratch to leverage the benefits of Cisco IOS XE, and the configuration model has been made more modular.

## On-site troubleshooting of distribution network automation terminal



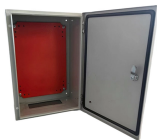
Troubleshoot telecom power systems in cabinets with a tool checklist and a four-step process for fast, safe, and accurate fault localization on site.



Research on Terminal Configuration Problem of Distribution Network Automation Based on Single-Objective Optimization Analysis Published in: 2022 7th International Conference on Power and ...



The handbook describes various power distribution system constructions and elements there-of, technical considerations, distribution automation infrastructure and functionality, communication ...



If your CPU load is constantly higher than 70%, then you may start looking deeper and find ways to optimize the use of the resources on the box. A good starting point would be to look at ...



To tackle this restriction, the present work puts forth a novel linear-programming-based reliability assessment method that is mathematically formulated, considering distribution automation ...



In this paper, a double-layer improved cloud model (ICM) is proposed for the first time to realize the condition assessment of DRTUs for condition-based maintenance.



ZPE Systems' Nodegrid improves upon IMI by fully integrating with a wide range of vendor PDUs and interface types, allowing remote admins to configure, troubleshoot, and recover PDUs as if they were ...



With the widespread use of DAS, higher requirements for distribution automation terminal on-site testing have been put forward on account of limitations of field working conditions.



The different approaches promoted by the different substation automation vendors are identified and detailed and the advantages of each are outlined. The characteristics and operation of the Intelligent ...



With our on-site support, RTA & IoT provides experienced field engineers who work alongside your maintenance team to troubleshoot, diagnose, and resolve issues in real time.

## Contact Us

For more information, pricing, or custom network solutions, please contact us:

Website: <https://hashherbcafe.co.za>

Email: [hello@hashherbcafe.co.za](mailto:hello@hashherbcafe.co.za)

Phone: +27 63 814 7295

Address: 15 Galaxy Road, Linbro Business Park, Johannesburg, 2065, South Africa

This document is for informational purposes only. Specifications subject to change without notice.

