

Number of 905nm laser diodes in Pakistan



Number of 905nm laser diodes in Pakistan



QSI 905nm 200mW Laser Diode Product Model: QL90R7SA/B/C Product Wavelength: 905nm Product Power: 200mW Product Package: TO18 (ø5.6mm)



Applications referenced on the attached data sheet include range finding and weapons simulation, as well as laser radar and surveying. These are low cost and high output power diode lasers and are ...



Use our pulsed 905 nm laser diodes as compact, economical, and reliable sources for LiDAR in automotive, industrial, and consumer applications. Housed in a TO-56 metal package, these lasers ...



Wah!Telecomms Cabling

These fiber-coupled 905 nm laser diodes are offered as stock items or associated with a CW or Pulsed Laser Diode Driver. They are compatible with our high speed nanosecond pulsed drivers or high ...



LiDAR sensors are required to have longer sensing distance and higher resolution, and in addition to improving the characteristics of the laser diode, it is necessary to drive the laser diode at higher ...



Mouser offers inventory, pricing, & datasheets for 905 nm Laser Diodes.



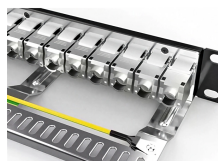
With various hermetic metal-can packages, these Pulsed Laser Diodes (PLDs) are designed to outperform in harsh environments. Comprising of stripe widths as narrow as 75 μm and power levels ...



Among the various types, the 905nm laser diodes stand out for their unique operational characteristics and broad applications. This article seeks to shed light on these laser diodes, their inner workings, ...



Find the right laser diode with just a few clicks. Just select your specifications in the search mask and you get an instant overview of all the laser diodes that meet your requirements.



These pulsed lasers are available with up to 100W of peak power at 905 nm. They offer a stable output power between -40°C and $+80^{\circ}\text{C}$.
Note: Test condition: $t_p=200\text{ns}$, $f=5\text{KHz}$, $T_c=25^{\circ}\text{C}$.
Max. We will ...

Contact Us

For more information, pricing, or custom network solutions, please contact us:

Website: <https://hashherbcafe.co.za>

Email: hello@hashherbcafe.co.za

Phone: +27 63 814 7295

Address: 15 Galaxy Road, Linbro Business Park, Johannesburg, 2065, South Africa

This document is for informational purposes only. Specifications subject to change without notice.

