

Nigeria Inquiry 400G Optical Module 1 6T



Description The OSFP-1.6T-2xDR4H is a cost-effective module with high performance, which is optimized for AI Datacenter, supporting data-rate of 8x212Gb/s PAM4 Optical interface and ...



Nigeria is located on the west coast of Africa and is the most populous black country in the world, bordering the North Atlantic Ocean, between Benin and Cameroon.



Nigeria, officially the Federal Republic of Nigeria, is the most populous country in Africa. Archaeological evidence shows that human habitation of the area dates back to at least 9000 B.C.E.



Discover Nigeria. Explore Nigeria facts, culture, history & comprehensive country profile with maps, statistics & research resources for students & travelers.



The 1.6T OSFP-XD DR8 optical module features low power consumption, high density, and hot-pluggable design, making it widely used in AI, HPC and hyperscale data centers.



Nigeria is a country located on the western coast of Africa that has a diverse geography, with climates ranging from arid to humid equatorial. Hundreds of languages are spoken in Nigeria, ...



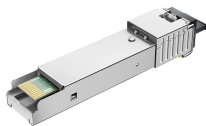
Physical map of Nigeria showing major cities, terrain, national parks, rivers, and surrounding countries with international borders and outline maps. Key facts about Nigeria.



Discover the evolution from 400G to 800G and 1.6T optical modules. Learn key technologies, CPO vs pluggable, and upgrade strategies for future-ready data centers.



Nigeria is a federal republic comprising 36 states and the Federal Capital Territory, where its capital, Abuja, is located. The largest city in Nigeria by population is Lagos, one of the ...



Genuine Optics 's 1.6T high speed optical module products use in-house silicon photonics chips.



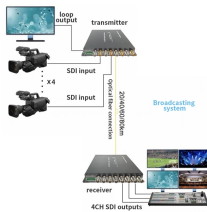
Nigeria borders Niger in the north, Chad in the northeast, Cameroon in the east, and Benin in the west. Nigeria is a federal republic comprising 36 states and the Federal Capital Territory, where its capital, ...



1.6T, 800G, and 400G optical transceivers for AI and hyperscale data centers, plus CPO/NPO optics and legacy 100G and 40G connectivity solutions.



Broadcom's Active Copper PHY portfolio enables DAC cable providers to build very low insertion-loss profile, ultra-low latency, ultra-low power cables for 100G/400G/800G/1.6T hyperscale/AI networks ...



Provides an overview of Nigeria, including key dates and facts about this west African country.



Equipment and electrical serdes can evolve through 3 generations (25 Gb/s, 50 Gb/s or 100 Gb/s) without changing the optical interface that interconnects your equipment.



Learn how 400G, 800G, 1.6T, and 3.2T optical transceivers—powered by silicon photonics and CPO—are updating AI, cloud, and hyperscale networks.



ACON OPTICS' 1.6T, 800G, and 400G optical transceiver series are engineered to meet the rigorous bandwidth and performance requirements of next-generation data centers.



The Abuja National Mosque is the national mosque of Nigeria located in Nigeria's capital Abuja. A virtual guide to Nigeria, officially the Federal Republic of Nigeria, a country in the south east of West Africa, ...



Master OSFP transceiver technology with our comprehensive guide. Covers 400G/800G/1.6T speeds, OSFP vs QSFP-DD comparison, thermal management, and AI ...

Contact Us

For more information, pricing, or custom network solutions, please contact us:

Website: <https://hashherbcafe.co.za>

Email: hello@hashherbcafe.co.za

Phone: +27 63 814 7295

Address: 15 Galaxy Road, Linbro Business Park, Johannesburg, 2065, South Africa

This document is for informational purposes only. Specifications subject to change without notice.

