

New Zealand manufacturer s 24-core fiber optic splice box



New Zealand manufacturer s 24-core fiber optic splice box



The outdoor fiber optic termination box FDB0224H is a rugged, weather-resistant solution for outdoor fiber network management. Made of durable, UV-stable plastic, it provides IP-rated protection ...



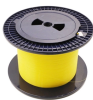
Furnished with four plugged cable ports (2 aluminum and 2 plastic) for either All-Dielectric Self-Supporting (ADSS) or Optical Ground Wire (OPGW) cables, the splice enclosure can be pre ...



Fiber Optic Box 24/48 Core with Adapter plate for 24xSC simplex / 24x LC duplex and splice tray Part Number: FB-24SCS-24 In Stock - +



Shop our 24 cores fiber optic splice boxes for reliable FTTH solutions. Durable, IP65-rated closures with high core counts for efficient network management.



Can orderly store fiber connector and remaining fiber, in which the storage disc can be up to four layers large capacity and adjusted according to the number of cores connected by the optical cable.



Fiber Optic Box 24/48 Core with Adapter plate for 24xSC simplex / 24x LC duplex and splice tray Part Number: FB-24SCS-24 In Stock - +



With HITRONIC SBX LAPP presents a new generation of splice boxes made of robust metal for installation in switch cabinets. The HITRONIC SBX fit on TH35 mounting rails and can be mounted on ...



The cable entries (inlets) are loaded with PG16 IP68 rated gland to protect the optical cables and transmission performance. 24 Port Fiber Distribution Box is used for splicing and termination ...



The 1688 platform provides direct sales of optical cable splice boxes from manufacturers, supporting 12-core/24-core outdoor waterproof splice boxes, including splicing tray and bracket installation, and ...



FTTH 24-core optical fiber distribution box 16-core PLC splitter box IP68, made of high-quality ABS material, supports 16-24 core, micro and plug-in splitters.



A 24-48 fibre wall box that is widely used in the FTTH access network. Hinged structure using lightweight plastic offering strength and resistance to chemical and U.V attack. Splice and patch all in ...

Contact Us

For more information, pricing, or custom network solutions, please contact us:

Website: <https://hashherbcafe.co.za>

Email: hello@hashherbcafe.co.za

Phone: +27 63 814 7295

Address: 15 Galaxy Road, Linbro Business Park, Johannesburg, 2065, South Africa

This document is for informational purposes only. Specifications subject to change without notice.

