




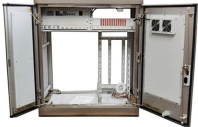

## Network cabinet converted to micro module



### Overview

Vertiv™ SmartMod™ is a flexible platform, optimized for simplified deployment of critical IT assets. For small room IT deployments up to 10 racks and 100kW or less, SmartMod offers a simple way to install capacity in a fraction of the time a typical IT build might take. High power grid adaptability, ensuring power supply reliability. The average annual PUE of the netcol5E is less than 1.5 Zhongtian Broadband Technology Co. provides data center products and solutions of different scales according to customer needs, including edge data centers, small and medium-sized data centers, and large data centers, with the ability to integrate products, solutions, and deliver integrated. FusionModule800 Smart Small Data Center is a new-generation data center solution. It is integrated with PDU, UPS, monitoring, cooling and rack system in a comprehensive rack in order to save space. IT racks can be deployed flexibly on both sides. Vertiv Virtual Showroom. At the core of this infrastructure are three critical components: power distribution cabinets, column header cabinets, and micro-module racks. They determine how power enters.

## Network cabinet converted to micro module

<p><b>Waterproof and dustproof, reliable and safe</b>  <small>The outer classic sink design allows the sealing ring of the cabinet and door to be seamlessly compressed without leaving a trace of gaps</small></p> 	<p>Provides micro-module integrated network cabinets for easy installation and convenient maintenance.</p>
	<p>The document describes three intelligent micro-module data center solutions: Fit Atom single cabinet, Fit Array single-row, and Fit Atrix double-row. Fit Atom is a single cabinet solution for small spaces.</p>
	<p>Near-end cooling and high-efficiency power supply. The average annual PUE of the netcol5E is less than 1.5.</p>
	<p>High-Density Integrated Modular Data Center with Cold Aisle Containment offers a durable, prefabricated solution for scalable data management.</p>
<p>SD-WAN modular power connector</p> 	<p>Suitable for green and energy-saving data centers with a small number of cabinets, high load on individual cabinets, and limited floor height in the data center.</p>



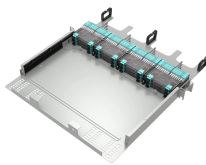
A micro-module rack is far more than a standard server rack. It is a fully integrated data center unit that combines racks, power distribution, cooling, monitoring, and cabling within a ...



A solution specifically for the construction of small and micro data centers. All subsystems of the data center are integrated in the cabinet, which integrates power distribution, UPS, monitoring, cooling ...



Vertiv™ SmartMod™ is a flexible platform, optimized for simplified deployment of critical IT assets. For small room IT deployments up to 10 racks and 100kW or less, SmartMod offers a simple way to ...



AgileRak™ Micro Data Center designed and engineered with seamless expansion compatibility, helps IT professionals smoothly plan, grow, and manage these future proof critical assets.



FusionModule800 Smart Small Data Center is a new-generation data center solution. It is integrated with PDU, UPS, monitoring, cooling and rack system in a comprehensive rack in order to save space. IT ...

## Contact Us

For more information, pricing, or custom network solutions, please contact us:

Website: <https://hashherbcafe.co.za>

Email: [hello@hashherbcafe.co.za](mailto:hello@hashherbcafe.co.za)

Phone: +27 63 814 7295

Address: 15 Galaxy Road, Linbro Business Park, Johannesburg, 2065, South Africa

This document is for informational purposes only. Specifications subject to change without notice.

