

## Namibian optical cable cut loss



### Overview

Telecom Namibia revealed that, according to network status reports, SAT-3 was cut on Sunday morning, while WACS went down later that night. The company apologised for the inconvenience caused, but assured its customers that it is collaborating with its international partners. TELECOM Namibia is grappling with poor connectivity due to a break in the fibre optic cables of the West African Cable System (WACS) and the South Atlantic 3 (SAT-3) undersea network. PICTURED: Telecom's Chief Executive Officer (CEO), Dr Stanley Shanapinda. The company. For more than three decades, Telecom Namibia has been the backbone of the country's communications landscape. The estimate, called a "loss budget" is calculated using typical component losses for.



## Namibian optical cable cut loss



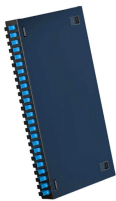
Telecom Namibia on Tuesday said it is experiencing sporadic service interruptions on some fixed and mobile, data and voice services, as a result of a fibre break on the West African ...



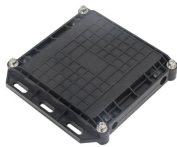
Figure 1 provides a locality map of the existing fibre optic telecommunication cable between Walvis Bay and Buitepos in the Erongo, Otjozondjupa, Omaheke and Khomas Regions of Namibia.



If you've recently noticed an increase in cable-laying activities around your neighborhood in Namibia, you're not alone. These cables are part of a significant infrastructure project aimed at ...



During the design phase, loss budgets calculated for each cable run should provide an estimate of the expected loss of the fibers in each cable link to compare to ...



Thirteen countries across Africa experienced Internet outages on Thursday due to damage to submarine fiber optic cables. Some countries, including Ghana and Nigeria, are still ...



However, these cables are susceptible to various faults that can disrupt communication services and lead to significant economic losses. In this ...



During the design phase, loss budgets calculated for each cable run should provide an estimate of the expected loss of the fibers in each cable link to compare to actual test results.



However, these cables are susceptible to various faults that can disrupt communication services and lead to significant economic losses. In this article, we will explore the most common ...



According to network status reports, SAT-3 was cut on Sunday morning, while WACS went down later that evening. Telecom Namibia has observed the issue of slow internet and is ...



The Sabotage Question: Copper Theft, Cable Cutting — or Something More? Of all the challenges facing Telecom Namibia, perhaps the most disturbing is the question of deliberate sabotage.



Telecom Namibia revealed that, according to network status reports, SAT-3 was cut on Sunday morning, while WACS went down later that night. The company apologised for the ...



work routes to achieve designed optical link loss over a period of time. In this paper, results of a statistical study is presented to understand impact of macro-bend loss, splice loss, installed cabled ...

## Contact Us

For more information, pricing, or custom network solutions, please contact us:

Website: <https://hashherbcafe.co.za>

Email: [hello@hashherbcafe.co.za](mailto:hello@hashherbcafe.co.za)

Phone: +27 63 814 7295

Address: 15 Galaxy Road, Linbro Business Park, Johannesburg, 2065, South Africa

This document is for informational purposes only. Specifications subject to change without notice.

