

Multimode fiber splicing failure

Ordering information

NO.	1	2	3	4	5	6
Model	SP12M1	SP24M2	SP48M4	SP6M1	SP12M2	SP24M4
Product name	Patch Panel	Patch Panel	Patch Panel	Patch Panel	Patch Panel	Patch Panel
Illustration						
HU	1	2	4	1	2	4
Maximum number of cores	144	288	576	144	288	576
Product size (excluding modules and adapters)	482.6*455*44 mm	482.6*455*88.1 mm	482.6*455*177 mm	482.6*455*44 mm	482.6*455*88.1 mm	482.6*455*177 mm
Standard color code	RAL9005	RAL9005	RAL9005	RAL9005	RAL9005	RAL9005
Inventory	√	√	√	√	√	√

Overview

Fiber misalignment and fiber geometry mismatch (e.) can result in real power loss across a splice joint. Two different methods exist for splicing fibers: Typical splice loss values (the measure of loss in optical power across the splice point) are usually lower for fusion splices (typically less than 0. 1. To be able to judge whether a fiber optic cable plant is good, one does a insertion loss test with a light source and power meter and compares that to an estimate of what is a reasonable loss for that cable plant. What is a mechanical splice?

What is a fusion splice?

Why splice?

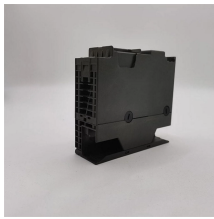
Fiber splicing is one way to join two optical fibers together so the light energy from one optical fiber can be transferred to another. fiber ends in a fusion-splicing machine. In any fiber joint, the fiber ends must be prepared sm oth and perpendicular to the fiber axis. In this guide, we break down the most

common causes of fiber splice. Optical fibers can be joined together, such that light is efficiently transferred from one fiber to another. That is usually done for permanent connections, but it.

Multimode fiber splicing failure



Essentially, the guided mode from the first fiber (the input) creates some amplitude profile in the second fiber, which may be somewhat displaced, for example, due to an imperfect splice.



Aim To measure the power loss at a splice between two multimode fibers, and study the variation of splice loss with transverse, longitudinal and angular offsets.



Learn the top 7 fiber optic splicing mistakes that cause signal loss and poor connections. Discover how to avoid them with proper tools, cleaning, and technique.



In this guide, we break down the most common causes of fiber splice failure, how to identify them, and what you can do to prevent them.



One factor which must be considered in the development of fiber optical communication systems is the effect of fiber core parameter manufacturing variations on splice loss.



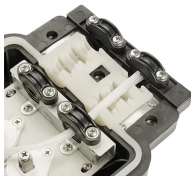
Learn the the intrinsic and extrinsic factors that can impact fiber optic splice performance and how you can create the best fiber optic network.



Insertion loss, defined as the loss in optical power at a joint between identical fibers, typically is 0.2 dB for mechanical multimode splices. Since single-mode fibers have small optical cores and hence small ...



We examine the splice loss occurring along a multimode fiber regenerator span and compare the results to a "standard" laboratory test condition.



To be able to judge whether a fiber optic cable plant is good, one does a insertion loss test with a light source and power meter and compares that to an estimate of ...



Mode field mismatch and alignment mechanisms cause loss when splicing, though it is possible to encourage diffusion across the joint to reduce loss.



To be able to judge whether a fiber optic cable plant is good, one does a insertion loss test with a light source and power meter and compares that to an estimate of what is a reasonable loss for that cable ...



Fiber misalignment is a byproduct of the splicing process and can occur with any splice. Even when splicing identical fibers together, if they are not perfectly aligned, optical power will be lost and ...

Contact Us

For more information, pricing, or custom network solutions, please contact us:

Website: <https://hashherbcafe.co.za>

Email: hello@hashherbcafe.co.za

Phone: +27 63 814 7295

Address: 15 Galaxy Road, Linbro Business Park, Johannesburg, 2065, South Africa

This document is for informational purposes only. Specifications subject to change without notice.

