

Mozambique OPGW Optical Cable Junction Box



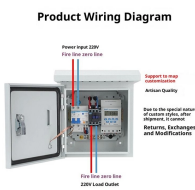
Mozambique OPGW Optical Cable Junction Box



To ensure that the OPGW cables will operate successfully in a high-voltage network, all aspects associated with the implementation of the technology must be correctly analysed.



OPGW Junction box is mainly used for protecting the fiber optic junction between two cables and reserve a section of fiber optic for maintenance in the box. The box has good leakproofness, anti ...



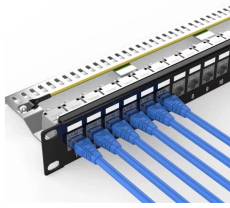
Fiber optic splice closure/box, with metal hoop, dome, vertical type, 2 (4x16mm) inlet or outlet ports, 1~4 trays for bunch fiber. For bunch fiber - 037 tray (110*93mm) with 12 cores and heat shrinkable ...



OPGW splice box provides essential features such as protection, sealing, compatibility, durability, easy access, temperature resistance, and modularity to ensure the reliability and longevity of OPGW cable ...



OPGW splice box provides essential features such as protection, sealing, ...



Browse our selection of mozambique optical cable junction box to find the perfect solution for your unique requirements.



Shop our high-quality OPGW joint boxes for reliable fiber optic splicing. Durable metal and plastic designs for pole and tower mounts. Bulk orders welcome.



Fibre optic metal joint box/joint closure/splice closure is used for the continuation of the optical cable in the middle of the tower, which has the advantages of high mechanical strength, good sealing ...



Fibre optic metal joint box/joint closure/splice closure is used for the continuation of the optical cable in the middle of the tower, which has the advantages of high ...



To prove you're not a bot, solve this simple math problem. The machine translated document is now available for download.



Furnished with four plugged cable ports (2 aluminum and 2 plastic) for either All-Dielectric Self-Supporting (ADSS) or Optical Ground Wire (OPGW) cables, the splice enclosure can be pre ...



The junction box accommodates ADSS (All-Dielectric Self-Supporting) and OPGW (Optical Ground Wire) cables, with oval and round ports supporting various cable diameters from 6mm to 33mm.

Contact Us

For more information, pricing, or custom network solutions, please contact us:

Website: <https://hashherbcafe.co.za>

Email: hello@hashherbcafe.co.za

Phone: +27 63 814 7295

Address: 15 Galaxy Road, Linbro Business Park, Johannesburg, 2065, South Africa

This document is for informational purposes only. Specifications subject to change without notice.

