

Moxa Industrial Switches Sri Lanka



Moxa Industrial Switches Sri Lanka



Explore our article library for a wealth of expert advice on improving your industrial network security. We strive to implement environmental practices that have a positive impact. Bringing out the best in our ...



This industrial Ethernet switch offers an economical solution for businesses needing reliable network connectivity without breaking the bank, making it ideal for small to medium-sized industrial applications.



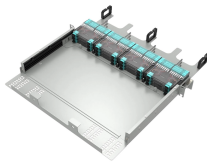
We offer a broad range of industrial Ethernet switches to connect your networks from edge to core. Our switches excel in extreme conditions (-40 to 75°C) and feature IEC 62443 based security to provide ...



Shop network switches in Sri Lanka at Sala.lk. Find reliable and efficient networking switches for your home or office with fast delivery island-wide.



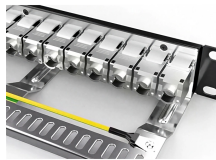
Moxa provides a wide range of industrial Ethernet switches that feature industrial-grade reliability, network redundancy, strengthened security, easy management, and competitive price-to ...



Shop MOXA EDS-316-SS-SC-T Industrial Ethernet Switch with 14 10/100BaseT (X) Ports, 2 100BaseFX Port, Single Mode SC,40Km Model with -40 to 75 Operating Temp online at a best price in Sri Lanka.



Moxa offers Industrial Ethernet Switches & Routers with industrial-grade reliability, network redundancy, enhanced security, easy management, and competitive price-to-performance ratios.



In addition to industrial switches, MOXA provides complete industrial communication solutions, including gateways, converters, and network devices designed for critical infrastructures.

Contact Us

For more information, pricing, or custom network solutions, please contact us:

Website: <https://hashherbcafe.co.za>

Email: hello@hashherbcafe.co.za

Phone: +27 63 814 7295

Address: 15 Galaxy Road, Linbro Business Park, Johannesburg, 2065, South Africa

This document is for informational purposes only. Specifications subject to change without notice.

