

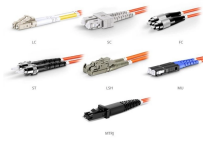
Mongolian Tray-type Cable Tray Standards



Mongolian Tray-type Cable Tray Standards



Cable tray length is selected based on the load to be supported, the distance between the supports (also referred to as the span), and handling and installation constraints.



DMI Fiber Patch Cable Family

2.1 Cable tray systems shall be of the design of one manufacturer and shall be designed so that there are no burrs, projections, or sharp edges to damage cable insulation.



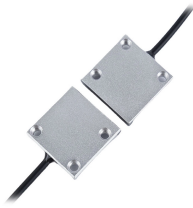
STANDARDS AND GUIDES YOU NEED TO KNOW
The following standards define the precautions to be taken when installing and using our products:



Answer: We are not aware of such industry standard, but cable trays offer significant advantages for this type of installation and in other computer, telecommunications, and power installations.



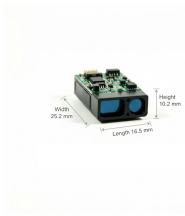
Covers construction and test requirements for continuous, complete nonmetallic systems of ladder, ventilated, solid bottom cable trays, or channel type trays, intended for the support of power or ...



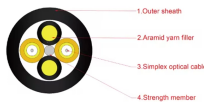
We, the renowned Electrical Cable Trays Manufacturer and Supplier in Mongolia, use premium materials like galvanized steel, stainless steel, and fiberglass to manufacture our cable trays. We ensure our ...



These standards ensure that cable trays are safe, durable, and function efficiently. In this article, we'll provide an in-depth look at the cable tray standard practices from 30 countries across ...



We offer a wide range of cable tray systems to support tubing, electrical cables and instrumentation. Our cable trays are produced in fit for purpose materials like stainless steel, galvanized, aluminium and ...



Our process adheres to the highest quality standards from design to production, ensuring that every cable receptacle can withstand harsh environments and heavy cable loads in Mongolia.



We offer top-notch Galvanized Cable Trays in Mongolia. These metal trays, coated with a special zinc shield, resist rust and last a long time, even in tough environments. They keep your wires tidy, cool, ...

Contact Us

For more information, pricing, or custom network solutions, please contact us:

Website: <https://hashherbcafe.co.za>

Email: hello@hashherbcafe.co.za

Phone: +27 63 814 7295

Address: 15 Galaxy Road, Linbro Business Park, Johannesburg, 2065, South Africa

This document is for informational purposes only. Specifications subject to change without notice.

