

Models of High and Low Voltage Complete Sets of Equipment in Eastern Europe



Overview

This guide provides a complete breakdown of the standardized process for high and low voltage switchgear installation. We'll detail every key step, from initial preparation to final checks. Electricity plays a critical role in ensuring national well-being and livelihoods, and the stable development of the power industry drives socio-economic progress. This solution covers a complete set of power equipment from low-voltage distribution. High voltage and low voltage complete sets occupy a significant place in modern electrical engineering as they are responsible for safe, secure, and efficient power distribution to all types of industries. They are known as complete switchgear assemblies because they integrate inside them such. The switchgear mainly consists of two parts: the cabinet body and the removable circuit breaker handcart. Every step is crucial when installing high and low voltage.

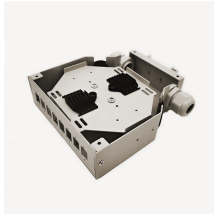
Models of High and Low Voltage Complete Sets of Equipment in East



This solution covers a complete set of power equipment from low-voltage distribution cabinets, high-voltage switchgear to transformers, automation control systems, etc., aiming to provide ...



This paper comprehensively explores the technical management and risk prevention of high and low voltage complete sets of equipment in power engineering.



We offer a broad range of switchgear products, including low voltage, medium voltage switchgear, and high voltage switchgear. We also offer a wide variety of components in all ...



Explore Chennuo Electric's range of high and low voltage complete sets, designed to ensure the reliable operation of power systems. Our solutions cater to a wide range of applications, offering stability and ...



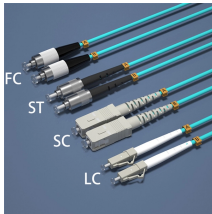
Integrated high and low voltage complete sets of equipment providing comprehensive power distribution solutions for industrial, commercial and energy systems.



This guide provides a complete breakdown of the standardized process for high and low voltage switchgear installation. We'll detail every key step, from initial preparation to final checks.



As an important type of electrical device, complete sets of electrical equipment belong to the category of electrical equipment, similar to switches, contactors, circuit breakers, and ...



Want to fully understand what high and low voltage complete sets of equipment are and want to explore the differences between the two? This article will interpret them from multiple aspects ...



With a well-proven modular platform concept, our high-voltage circuit breakers are adaptable to your specific requirements, ensuring they can handle extremely high voltage levels effectively.

Contact Us

For more information, pricing, or custom network solutions, please contact us:

Website: <https://hashherbcafe.co.za>

Email: hello@hashherbcafe.co.za

Phone: +27 63 814 7295

Address: 15 Galaxy Road, Linbro Business Park, Johannesburg, 2065, South Africa

This document is for informational purposes only. Specifications subject to change without notice.

