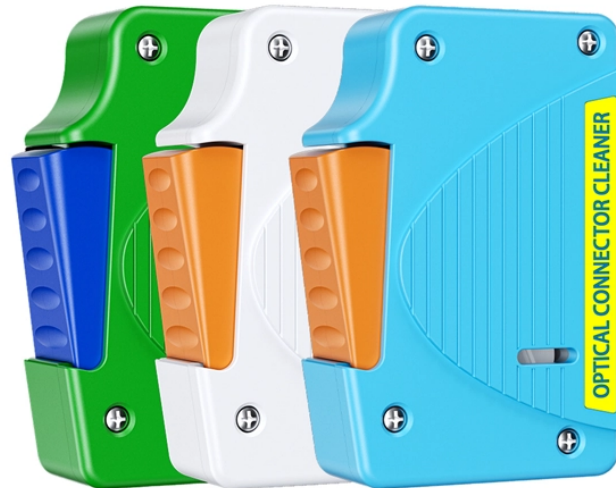


Model of wall-mounted concealed electrical box



Model of wall-mounted concealed electrical box



Easy Installation Design: This recessed socket box features a concealed mount design that allows quick and convenient installation without requiring additional connection pieces, making it ideal for both ...



Our electrical metal box size chart includes a wide range of concealed box sizes, from compact units to large-scale enclosures like the 12 modular box. This variety ensures compatibility with different ...



Indoor and Outdoor Concealed Wall-Mounted Base Box, Distribution Box, Low-Voltage Box, Domestic Water Meter Box, Power Cabinet, Electrical Switch Box. US\$100.00 1 Piece (MOQ) ...



Durable 86 type metal concealed mounting project box for wall switch wiring, galvanized junction box with heightening and thickening design. Ideal for 1 gang box metal applications in electrical installations.



Space efficient design: the recessed design does not occupy space, providing a neat and stylish appearance suitable for any decor, concealed boxes, wall mounted socket boxes



The 17-in TV Media in-wall box is ideal for concealing and organizing media devices and power in wall to create a sleek, finished look. The perfect solution directly behind any wall mounted TV to store ...



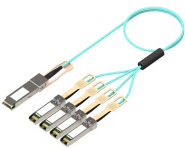
The AE Series Wall Mounted Electrical Box is engineered to provide reliable protection for your critical electrical and electronic components. Designed with a robust construction and high IP rating, this ...



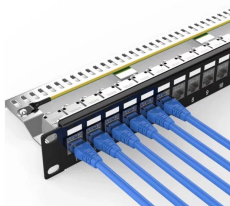
Shop high-quality electrical concealed boxes for reliable and safe power distribution. Find durable, waterproof, and customizable solutions for any project.



Payal concealed boxes offer excellent protection against external influences and protect your wires and cables from moisture, heat, and physical damage. It increases the durability of your wiring devices ...



We manufacture concealed boxes & boards in a variety of designs, dimensions, and sizes.



Durable 86 type metal concealed mounting project box for wall ...

Contact Us

For more information, pricing, or custom network solutions, please contact us:

Website: <https://hashherbcafe.co.za>

Email: hello@hashherbcafe.co.za

Phone: +27 63 814 7295

Address: 15 Galaxy Road, Linbro Business Park, Johannesburg, 2065, South Africa

This document is for informational purposes only. Specifications subject to change without notice.

