

Mexican Zinc-Aluminum-Magnesium Cable Tray Processing



Mexican Zinc-Aluminum-Magnesium Cable Tray Processing



A review of the state of the art of metal coatings based on ZM alloys is presented, which covers their evolution over time, the different qualities and designations existing in the market, their structure and ...



This article will explore the definition, key features, production process, and applications of Zinc-Aluminum-Magnesium Cable Tray, along with a comparison to traditional cable tray solutions.



Tamlex Zinc Magnesium cable trays offer a robust and corrosion-resistant solution for cable management in both industrial and commercial environments. Their lightweight construction allows ...



There is a solution for each type of environment. This white paper compares the High Resistance (HR) and Hot-Dip Galvanising (HDG) solutions and highlights the new High Resistance range, ZnAl ...



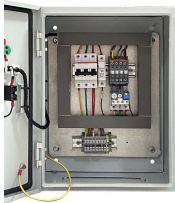
A corrosion-resistant cable support system manufactured from steel substrate with advanced Zn-Al-Mg alloy coating. Standard configurations include ladder-type, tray-type, and ...



This feature not only accelerates the installation process but also minimizes labor costs, making ****Zinc-Aluminium-Magnesium cable trays**** a cost-effective solution for modern electrical ...



ZM is a metallic coating applied to steel which is made up of a chemical composition which includes Zinc, Magnesium and Aluminium. The unique composition offers excellent corrosion protection which ...



These products are manufactured from mild steel, then transported to a galvanising plant for a multistage process, which adds cost, increases the environmental impact and extends the logistical ...



Zinc-Aluminum-Magnesium Trough-Type (Enclosed) Cable Tray High Protection Rating: Completely isolates dust, moisture, oil contamination, and external mechanical damage, providing the most ...



Products Cable Tray ECTRAY offer a wide range of perforated cable trays which are fabricated using quality raw material such as Zinc Aluminum Magnesium (ZAM).



When the coating is damaged during cutting or installation, magnesium and zinc ions actively migrate to the scratched areas. They form dense corrosion products like basic zinc chloride, automatically ...

Contact Us

For more information, pricing, or custom network solutions, please contact us:

Website: <https://hashherbcafe.co.za>

Email: hello@hashherbcafe.co.za

Phone: +27 63 814 7295

Address: 15 Galaxy Road, Linbro Business Park, Johannesburg, 2065, South Africa

This document is for informational purposes only. Specifications subject to change without notice.

