

Maximum Size of Distribution Box



Overview

In this guide, I'll walk you through a practical, step-by-step process to size your distribution box based on actual load current. This guide helps you determine the correct dimensions based on wire fill capacity, device requirements, and installation environment, ensuring a safe and efficient electrical system. Learn how to. stallation and use of boxes. The box capacity table shown (page A-5) is reproduced in part from the NEC® as a quick reference and. Electrical systems power our homes, offices, and industrial facilities, but behind every reliable electrical setup lies a crucial component that often goes unnoticed: the distribution box. This essential piece of equipment serves as the nerve center of your electrical system, managing power flow. How to choose a distribution box of the right size for a project based on load current?

Get it right the first time with this comprehensive guide If you're like most electrical professionals, picking the right distribution box for your project can feel like navigating a maze.

Maximum Size of Distribution Box



If you work with large electrical power distribution boxes, you need to check the depth and internal volume. These factors decide how many wires and devices you can fit.



Learn what a distribution box is, its types, and how to choose the right one for your project. Includes clear examples and expert tips.



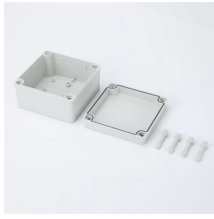
Installing a household distribution box requires careful attention to specifications and safety guidelines. Understanding these parameters is vital for ensuring the safety and efficiency of ...



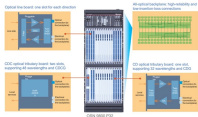
Metal Distribution Box Features Continuously welded seams Foam-in-place seamless gasket 120-degree opening heavy-duty industrial hinges IP66 protection rating against dust and water according ...



How do I choose the right size distribution box? Size selection depends on the number of circuits needed, current ratings, and future expansion plans. Calculate the total electrical load and ...



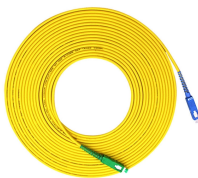
Choosing the right distribution box isn't one-size-fits-all. You need to consider where it will be used, how much power it needs to handle, and how well it's built to last.



(3) Support Fittings Fill. Where one or more luminaire studs or hickey are present in the box, a single volume allowance in accordance with Table 314.16(B) shall be made for each type of fitting based on ...



In this guide, I'll walk you through a practical, step-by-step process to size your distribution box based on actual load current. We'll cover everything from understanding your circuits to planning for future ...



Choosing the right electrical junction box size is crucial for safety and code compliance in your US projects. This guide helps you determine the correct dimensions based on wire fill capacity, ...



This guide provides information on how to select the appropriate Distribution Box for Electric project. If you have any questions about distribution boxes, please feel free to contact us.

Contact Us

For more information, pricing, or custom network solutions, please contact us:

Website: <https://hashherbcafe.co.za>

Email: hello@hashherbcafe.co.za

Phone: +27 63 814 7295

Address: 15 Galaxy Road, Linbro Business Park, Johannesburg, 2065, South Africa

This document is for informational purposes only. Specifications subject to change without notice.

