

Maltese manufacturer s bend-insensitive optical fiber OS2



Overview

Classic OS2 and OM3/OM4 fibers are still widely used, but 2026 deployments are increasingly built around bend-insensitive fibers and wideband multimode. Designed for tight bend radius with minimal added loss; ideal as the default singlemode pigtail fiber in 2026. Bending losses are a function of the fiber type (SM or MM), fiber design (core diameter and NA), transmission wavelength (longer wavelengths are more sensitive to stress) and cable design. In 2007, a new type of "bend-insensitive" singlemode fiber was introduced, followed by multimode fiber in. How to choose, deploy, and scale fiber optic pigtails in a world of FTTR, 800G/1.6T optics, AI clusters, and ESG-driven infrastructure projects. A2 bend-insensitive pigtails are becoming the new default for FTTR and compact routing.

Maltese manufacturer s bend-insensitive optical fiber OS2



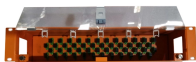
The Maltese is a zesty, bold, and people-oriented breed that loves to be the star of the show. They're a little less hyperactive than you'd expect and love to please you more than anything.



What is bend-insensitive fiber? We break down everything you need to know about BIF, from the definition to how it operates, advantages & types.



Bend-insensitive single mode fibres (ITU-T G.657.A1 and G.657.A2) are a crucial part of the world's shift towards flexible and reliable connectivity. They are the only fibres capable of securing the whole fibre ...



In terms of optically bend insensitive fiber, this means that a fiber has been designed to mitigate the optical losses that are associated with tight bend radii.



The Maltese dog is a small companion breed originally from the island of Malta with a playful and affectionate personality.



Maltese, breed of toy dog named for the island of Malta, where it may have originated more than 2,500 years ago. Delicate in appearance but usually vigorous, healthy, affectionate, and ...



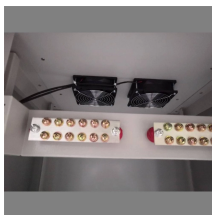
Thinking of adopting a Maltese Dog? Find out everything you need to know, including puppy costs, breed facts, and more.



The Maltese dog breed is known for sporting a luxurious white coat and affectionate disposition. Learn about this toy breed's history, health, training, and more.



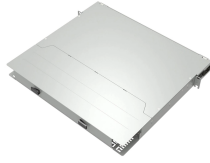
What is a Maltese? A Maltese is a small breed of dog with long, silky white coat and gentle and affectionate nature. They have a lively and playful temperament and are well-suited for both families ...



ClearCurve bend-insensitive fibers are compliant with ITU-T Recommendations G.652.D and G.657, providing superior installation speed and efficiency, and greater successful installations in homes and ...



Discover the benefits of bend-insensitive fiber for reducing stress and bending loss in optical fiber. Learn about its design, applications, and compatibility with conventional fiber cable.



Discover the 2026 Fiber Optic Pigtail Guide—covering SN/CS/MDC VSFF connectors, bend-insensitive OS2 G.657.A2, OM5 ribbon pigtails and AI ...



The Maltese and similar breeds such as the Havanese, Bichon and Bolognese, are indeed related, perhaps through a common ancestor resulting from a severe bottleneck when a handful of petite ...



Exact origins of the Maltese breed are still debated today. Article written by Larry Stanberry with information coming from the history and evolution of the breed - particularly from a book by Nick ...



These qualities of low attenuation and bend resistance mean they are ideal for Fiber-to-the-Home (FTTH) deployments, for high-speed and more reliable connectivity.



Is the Maltese the right breed for you? Learn more about the Maltese including personality, history, grooming, pictures, videos, and the AKC breed standard.



Discover the 2026 Fiber Optic Pigtail Guide—covering SN/CS/MDC VSFF connectors, bend-insensitive OS2 G.657.A2, OM5 ribbon pigtails and AI-ready high-density deployments for ...



Let's examine the design of bend-insensitive multimode fiber (which we will usually call by its acronym BI MMF) that shows the technique. In regular graded index multimode fiber, there are many modes (or ...



The Maltese is a small dog with dark, friendly eyes; a small black nose; and white fur. While they traditionally have a long, silky coat, some pet parents give these dogs short haircuts, ...



Bend-insensitive multimode fiber (BIMMF) incorporates an innovative core design, demonstrating a remarkable capacity to minimize macro bend loss even under the most challenging bending ...



Both 80 and 125 μm cladding diameters are available, with bend insensitivity increasing with smaller fiber diameter. These fibers are commonly used in fiber optic gyroscope assemblies or in optical fiber ...

Contact Us

For more information, pricing, or custom network solutions, please contact us:

Website: <https://hashherbcafe.co.za>

Email: hello@hashherbcafe.co.za

Phone: +27 63 814 7295

Address: 15 Galaxy Road, Linbro Business Park, Johannesburg, 2065, South Africa

This document is for informational purposes only. Specifications subject to change without notice.

